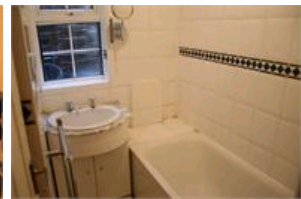
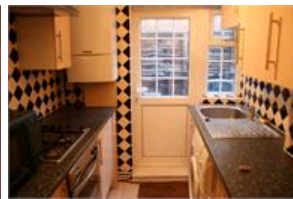
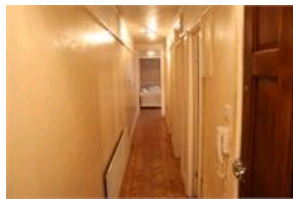
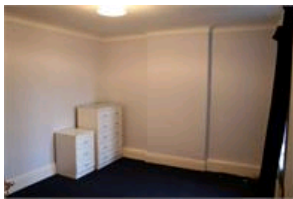


Upper Elmers End Road BR3 3QY (1 Bedroom Flat)

£650/month



## property features

- › Spacious one double bedroom, 1st floor flat
- › Reception room with parquet flooring
- › Entry phone system
- › Fully fitted bathroom
- › Kitchen with all the mod cons leading to a private balcony
- › Within 5 mins walk to rail station (20mins to London Bridge) and Tram into Croydon,

## property description

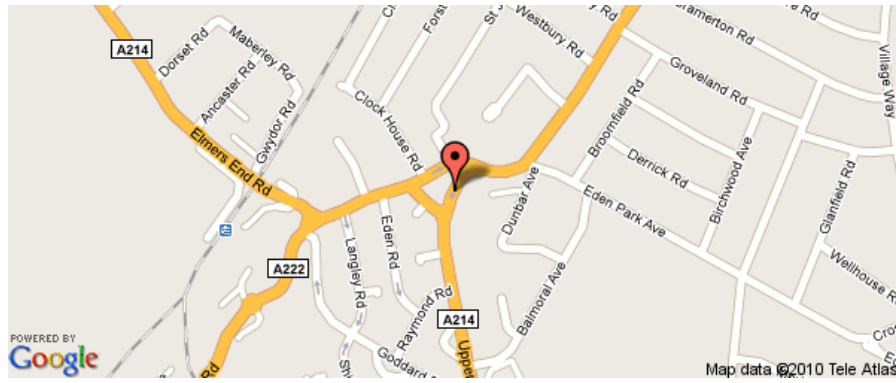
Spacious and well looked after one bedroom flat, set on the first floor of this 1930's block. The property briefly comprises entrance hall with entry phone, wooden parquet flooring throughout, Large reception room, spacious double bedroom, fully fitted bathroom, separate WC and a neat kitchen with all the mod cons leading to a private balcony facing the rear of the building. The property is within a 5 minute walk of Elmers End rail station which will whisk you into London Bridge in 20mins. Good bus routes and the tram to Croydon are well within walking distance as well as there being an array of local amenities such as shops and the local supermarket. Available immediately!

Pickwick Estates  
8 Woodwarde Road  
Dulwich  
London  
SE22 8UJ  
United Kingdom

Telephone:  
The Dulwich Team  
on 020 8299 1188

These property details are believed to be correct but their accuracy is not guaranteed and they do not form part of any official contract.





Pickwick Estates  
8 Woodwarde Road  
Dulwich  
London  
SE22 8UJ  
United Kingdom

Telephone:  
The Dulwich Team  
on [020 8299 1188](tel:02082991188)

These property details are believed to be correct but their accuracy is not guaranteed and they do not form part of any official contract.

