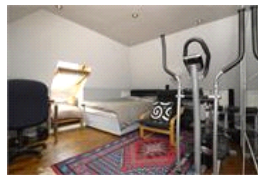


Dovercourt Road, SE22 (5 bedroom House)

£1,550,000



property description

Nestled comfortably on leafy Dovercourt Road at the village end is this handsome 5 double bedroom semi-detached house which offers flexible accommodation for the growing family! The large living accommodation to the ground floor offers in brief, 2 large reception areas, one of which leads out onto the rear garden, a smart kitchen breakfast room with all the mod cons, a handy utility room and downstairs WC. The first and second floors house the large bedrooms, the top floor consisting of a bedroom and bathroom which would be ideal as an au-pair's suite. All this and a sunny rear garden... what are you waiting for?

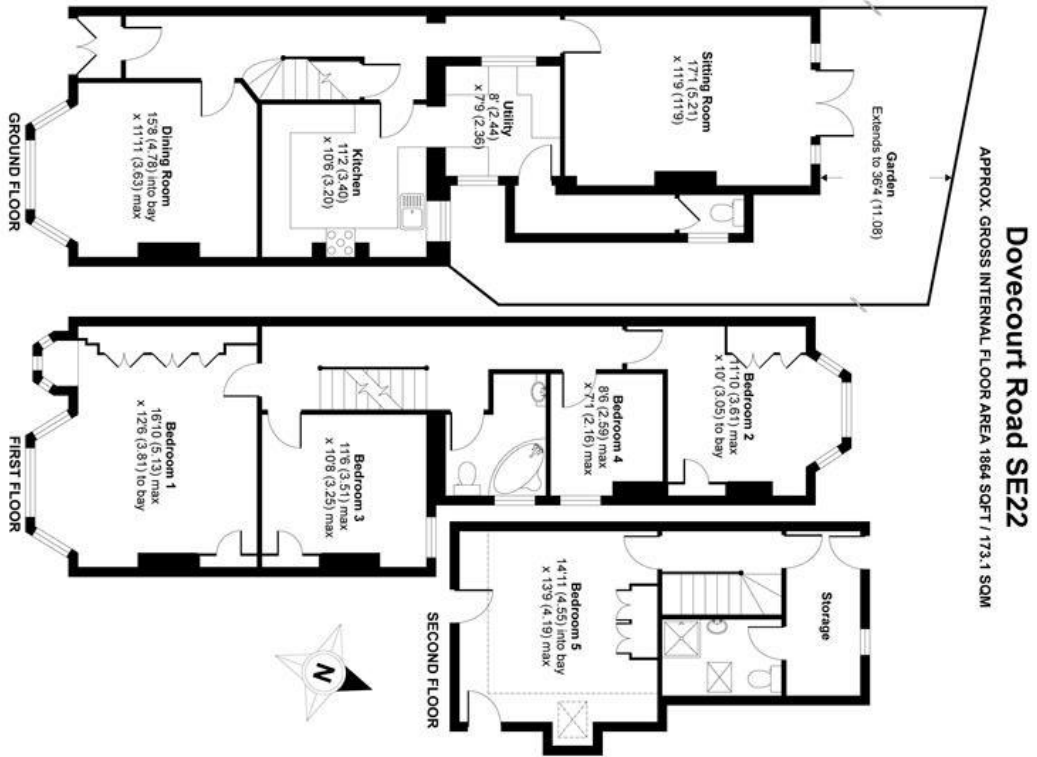
property features

- Large 5 bedroom semi detached Edwardian family house
- 2 large reception rooms
- Smart kitchen/breakfast room, handy utility room, downstairs WC
- 5 bedrooms 2 bathrooms (one ensuite)
- Sunny rear garden
- Close to Dulwich Village, the Park and local rail stations

ALPS Estates Ltd trading as Pickwick Estates
8 Woodward Road Dulwich
London, SE22 8UJ, United Kingdom
Reg No : 4270797
Registered in England

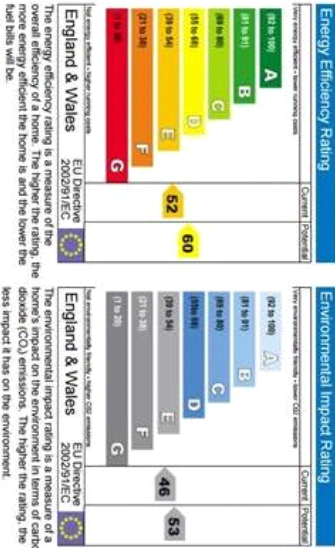
Telephone : 020 3397 1144
Website : <https://www.pickwickestates.co.uk>





Whilst every attempt has been made to ensure the accuracy of the floor plans contained here, measurements of doors, windows and rooms are approximate and no responsibility is taken for any error, omission or misstatement. These plans are for representation only and are not intended to be used for construction purposes. The services, systems and appliances listed in this specification have not been tested by Pickwick Estates and no guarantee as to their operating ability or their efficiency can be given.

Copyright niches.com.co.uk 2007 Produced for Pickwick Estates REF: 07-27848



For Full EPC information, click [here](#)