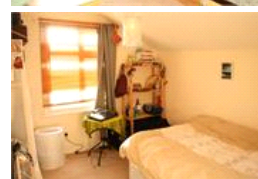
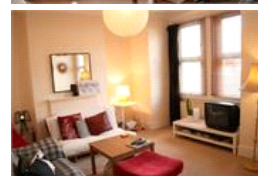
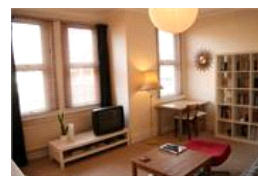


Beauval Road, SE22 (3 bedroom Flat)

£1,750/month



### property description

IDEAL FOR 2 SHARERS OR A FAMILY. Superb 1st floor flat in this Victorian period conversion with 2 double bedrooms plus additional study, 2 bathrooms, kitchen and spacious reception room. Close to Dulwich Village and all amenities, good bus route on Lordship Lane and the nearest stations are North Dulwich and East Dulwich. Viewing highly recommended. Available September 2020

### property features

- 1st floor of this Victorian period conversion
- 2 bedrooms, plus study
- 2 bathrooms
- Available September 2020
- Fully fitted kitchen
- Reception room
- Located on this popular treelined Street moments from the action of Lordship Lane & North Dulwich St
- IDEAL FOR 2 SHARERS OR A FAMILY.

Beauval Road, SE22 (3 bedroom Flat)

£1,750/month

