

Folgate Street, E1 (2 bedroom Flat)

£2,200/month



property description

Pickwick Estates are proud to present this spacious 2 bedroom flat, located just a stones throw from Spitalfields Market with its trendy shops and bars. The property is on the first floor overlooking Folgate Street and has a large light lounge/ dining room and a separate kitchen with integrated appliances. The master double bedroom has a fitted wardrobe and en-suite shower room. There is a 2nd double bedroom and a bathroom. The rental comes with underground parking for a small car and also benefits from a concierge service and use of a small gym. It is ideally located for Liverpool Street Station, the City, Shoreditch and Brick Lane. The property comes furnished (although furniture shown is ...

property features

- 2 double bedrooms
- 2 bathrooms, 1 en suite
- Underground Parking for 1 small car
- Furnished
- Convenient for Liverpool St Station (mainline and Underground) and the City
- Close to Spitalfields Market and Broadgate

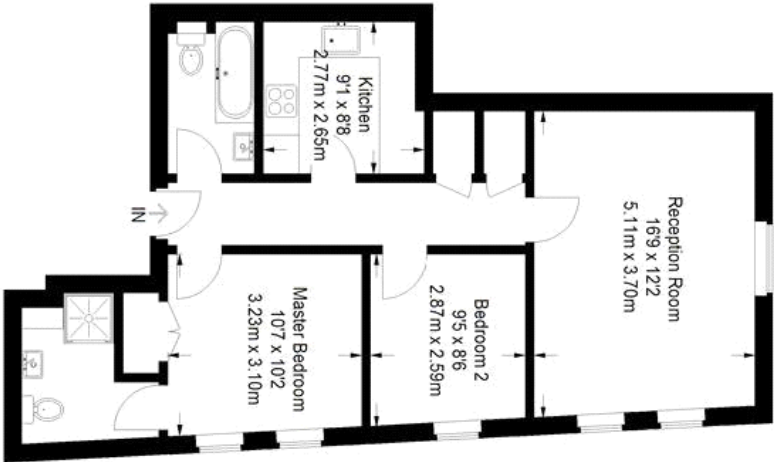
ALPS Estates Ltd trading as Pickwick Estates
47 Honor Oak Park Honor Oak
London, SE23 1EA, United Kingdom
Reg No : 7444750
Registered in England

Telephone : 020 3397 1166
Website : <https://www.pickwickestates.co.uk>



Folgate Street

Approximate Gross Internal Area
684 sq ft / 63.6 sq m



First Floor

Note to scale. Not guidance only and must not be relied upon as a statement of fact.
All measurements and areas are approximate only and have been prepared in accordance with the current edition of the RICS Code of Measuring Practice.



For Full EPC information, click [here](#)