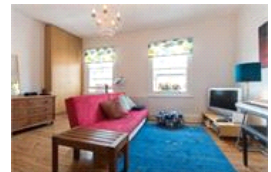
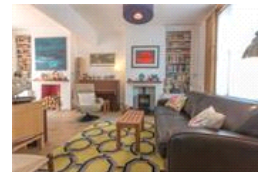
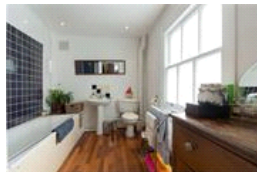
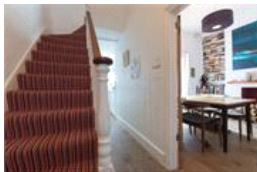
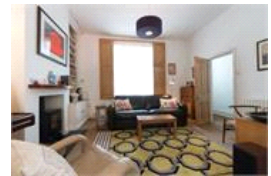
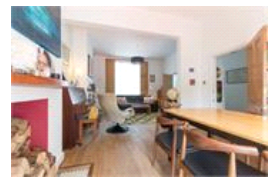
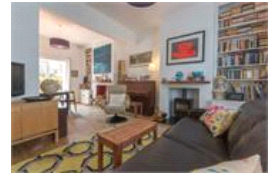


Tell Grove, SE22 (4 bedroom House)

£3,100/month



## property description

NOT SUITABLE FOR SHARERS. This stunning four-bedroom, two-bathroom property presents an exceptional opportunity for those seeking a spacious and elegant home. The house boasts a large reception room, perfect for entertaining, and a fully fitted kitchen, ideal for culinary enthusiasts. Conveniently situated, this residence is within close proximity to a wealth of amenities. Residents will enjoy easy access to shops, restaurants, and public transport, making everyday life effortlessly convenient. The nearest bus stop is just a short walk away, while the East Dulwich, North Dulwich, and Peckham Rye railway stations are all within 2 kilometers, providing excellent connectivity to the rest of ...

## property features

- Beautiful Victorian family home
- Short walk to East Dulwich station
- Nearby local sought after schools
- NOT SUITABLE FOR SHARERS
- Four bedrooms
- Unfurnished
- Available from January 2025

ALPS Estates Ltd trading as Pickwick Estates  
8 Woodward Road Dulwich  
London, SE22 8UJ, United Kingdom  
Reg No : 4270797  
Registered in England

Telephone : 020 3397 1144  
Website : <https://www.pickwickestates.co.uk>



