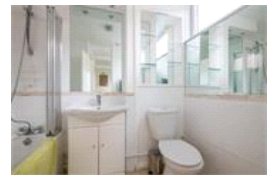
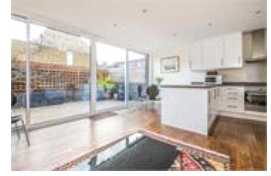
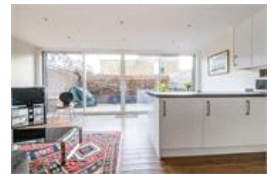
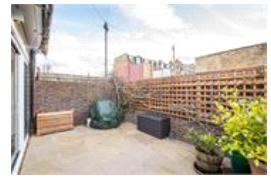


Springvale Terrace, W14 (1 bedroom Flat)

£1,900/month



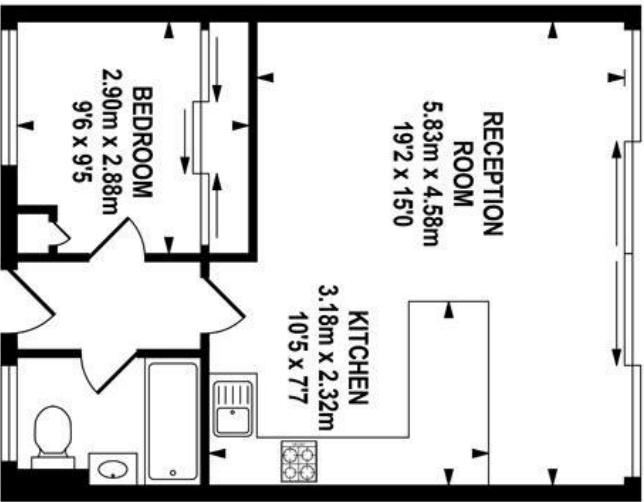
property description

Available now! Superb, modern, FULLY FURNISHED 1 bedroom terraced house with kitchen/sitting room, double bedroom, bathroom with shower and sunny PRIVATE REAR GARDEN. Located in this quite terrace close to a variety of local shops including Westfield shopping Centre with its extensive retail, restaurant and leisure facilities. Transport links include Hammersmith Broadway, Shepherds Bush and Kensington Olympia.

property features

- One bedroom terraced house
- Sitting room
- Fully integrated kitchen
- Double glazing throughout
- Double bedroom with fitted cupboards
- Sunny and secluded private rear garden
- Bathroom with shower
- FULLY FURNISHED





SITE PLAN

TOTAL APPROX.FLOOR AREA 43.90 SQ.M. (473 SQ.FT.)

Whilst every effort is made to accurately reproduce these floor plans, measurements are approximate, not to scale and for illustrative purposes only.

© Dulwich Energy Assessors Ltd. www.dea-ltd.co.uk



For Full EPC information, click [here](#)