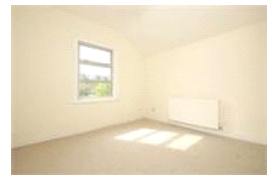
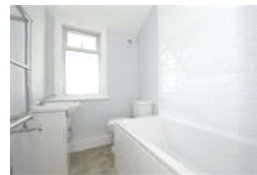
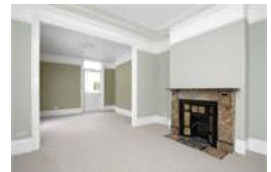


Bovill Road, SE23 (4 bedroom House)

£2,500/month



## property description

Lovely 4 bedroom Victorian home. This striking mid terrace, red brick house is oozing with character and is located on the cul de sac end of Bovill Road which makes the house very quiet and offers additional privacy. The house offers a substantial amount of space. On the ground floor is a large double reception room with high ceilings, cornicing, feature fireplaces, bay sash windows and French doors to the garden. From the main hallway there is an additional reception/dining area in the centre of the house that leads to a spacious kitchen overlooking the garden to the rear. The garden is WEST facing and is divided into a patio area and lawn. Perfect for catching afternoon sunshine and a spot...

## property features

- 4 Double beds -
- Large double reception room with access to the garden
- Separate dining room leading to fitted Kitchen
- WEST facing rear garden
- 4 double bedrooms upstairs
- Honor Oak Park is the nearest station, Overground and NR to London Bridge

ALPS Estates Ltd trading as Pickwick Estates  
47 Honor Oak Park Honor Oak  
London, SE23 1EA, United Kingdom  
Reg No : 7444750  
Registered in England

Telephone : 020 3397 1166  
Website : <https://www.pickwickestates.co.uk>





For Full EPC information, click [here](#)