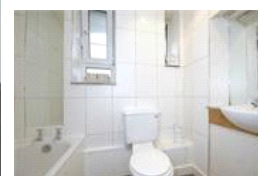
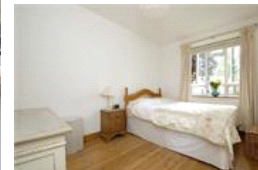
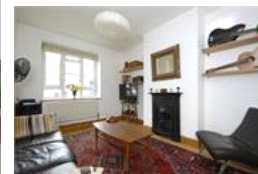


Halliwell Court, SE22 (1 Bedroom Flat)

£325,000



### property description

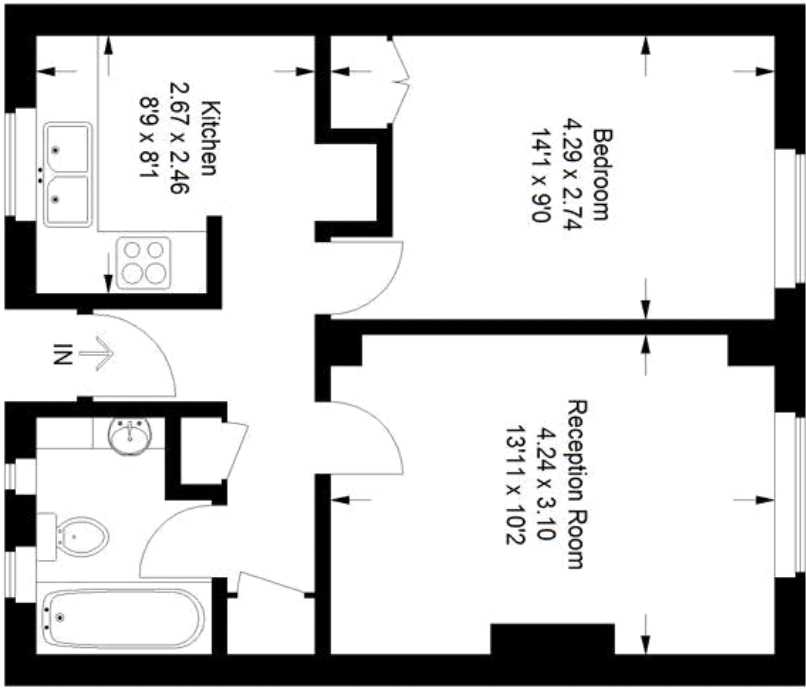
Situated on a popular road in central East Dulwich, this beautifully presented one bedroom flat is a little gem. The flat is 1st floor presented immaculately throughout with modern fitted kitchen and bathroom. The reception room has a cast iron fireplace and stripped wooden floor, one double bedroom also with stripped floorboards. Barry Road is ideally situated for transport to Central London with many buses right on your doorstep and East Dulwich and Peckham Rye stations just a short walk away.

### property features

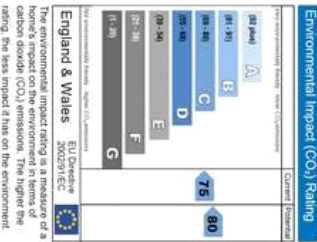
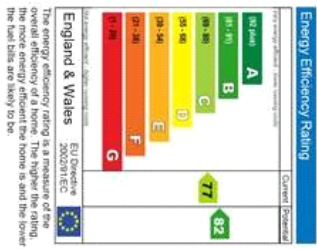
- Stripped floorboards
- Fully Fitted Kitchen
- Communal gardens
- Great transport links
- Fantastic location
- Off street parking



# Halliwell Court



Approximate Gross Internal Area  
42.3 sq m / 455 sq ft  
Illustration for identification purposes only.  
Measurements are approximate.  
Drawn for Pickwick Estates



For Full EPC information, click [here](#)