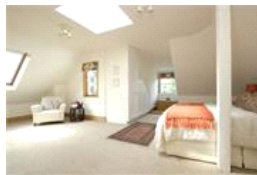
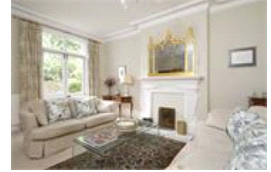


Eynella Road , SE22 (5 bedroom House)

£1,950,000



property description

This grand five bedroom detached period family home is truly one of a kind. Pickwick Estates proudly presents the only double fronted detached Edwardian house on one of Dulwich's premier tree-lined streets. The house retains many of its original period features throughout and also benefits from having off street parking for a couple of cars and a large garage. This handsome house proudly sits at the end of Eynella Road neighbouring the gates of Dulwich Park, perfect for sunny afternoon strolls or families looking for green open spaces to roam. The grand double fronted exterior invites you into the house through a neatly manicured front garden with a centralised pathway to a large door. A va...

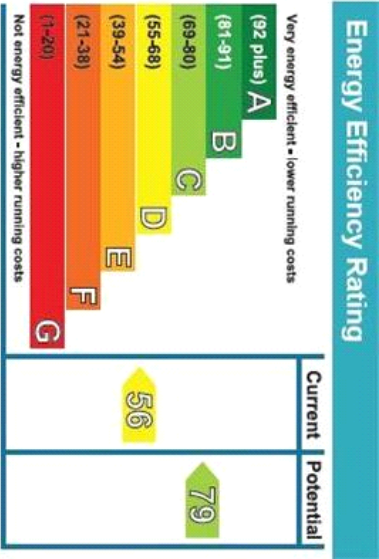
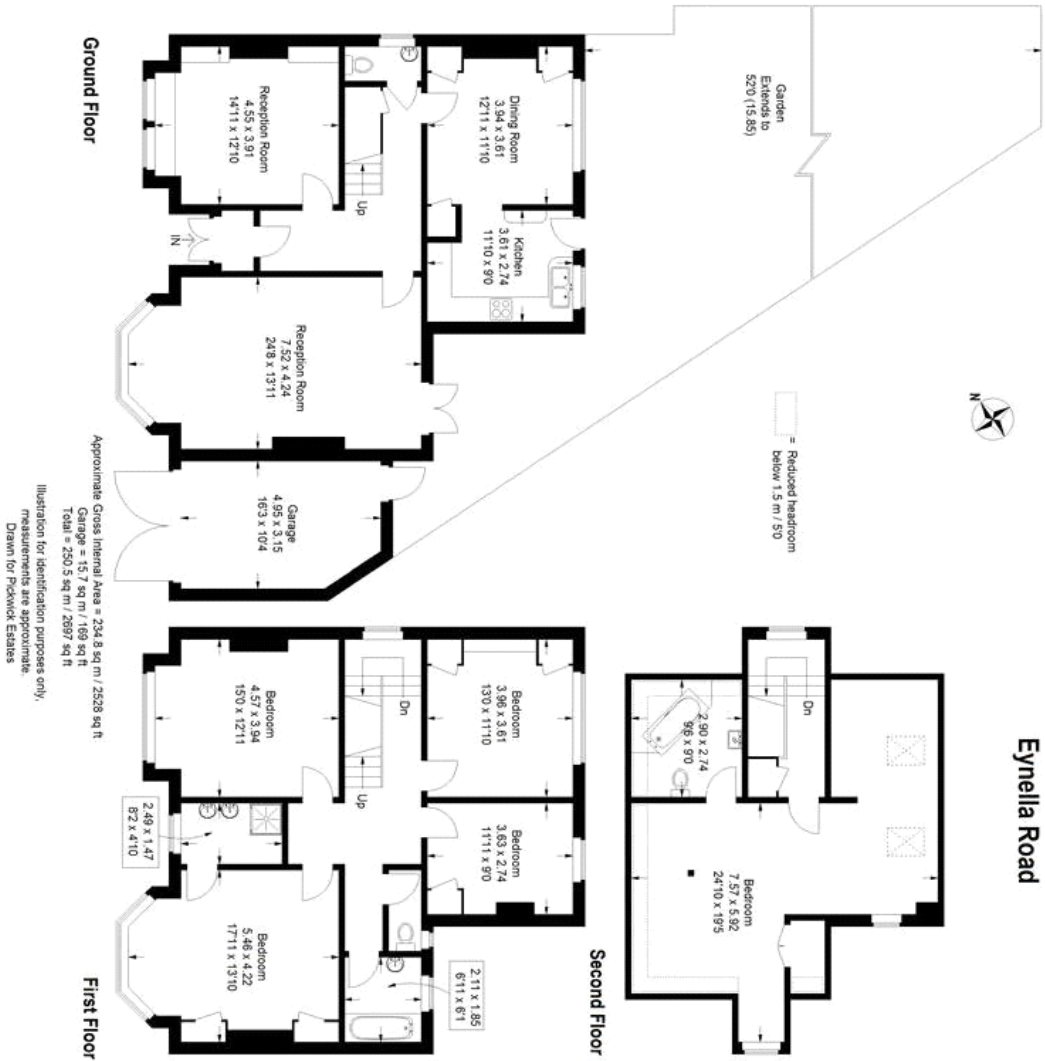
property features

- 5 double bedroom detached Edwardian family home
- Off street parking and separate garage
- 2 spacious reception rooms
- Kitchen and dining room
- 3 bathrooms and 2 separate WC
- Next to the gates of Dulwich park, nearest stations North and East Dulwich (London Bridge)

ALPS Estates Ltd trading as Pickwick Estates
8 Woodward Road Dulwich
London, SE22 8UJ, United Kingdom
Reg No : 4270797
Registered in England

Telephone : 020 3397 1144
Website : <https://www.pickwickestates.co.uk>





For Full EPC Information, click [here](#)