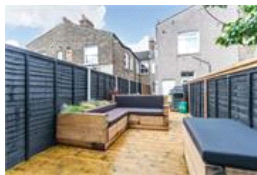
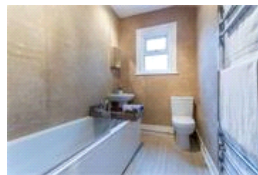
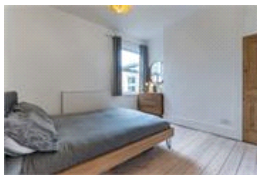


Stondon Park, SE23 (3 bedroom Flat)

£470,000



## property description

Conveniently located, light and spacious, well decorated ... what else could you ask for in a 3 bedroom flat? Situated on the first floor of a lovely Victorian period house is this great flat with its own entrance to the property which leads you to a landing, convenient for leaving shoes, coats and brollies. Upstairs is a large reception room to the front of the house. There is an abundance of space and with large double glazed windows there is plenty of light too! The 2 double bedrooms are of equal size and both quietly tucked away - third bedroom is also a good size single. There is a fully fitted bathroom that is neutrally decorated to a high standard. The kitchen is well laid out with pl...

## property features

- 3 bed first floor flat in a Victorian terrace
- Private garden
- Light and airy feel
- 2 good size double bedroom
- modern kitchen and bathroom
- Closest stations Honor Oak Park and Crofton Park

ALPS Estates Ltd trading as Pickwick Estates  
47 Honor Oak Park Honor Oak  
London, SE23 1EA, United Kingdom  
Reg No : 7444750  
Registered in England

Telephone : 020 3397 1166  
Website : <https://www.pickwickestates.co.uk>



Stondon Park

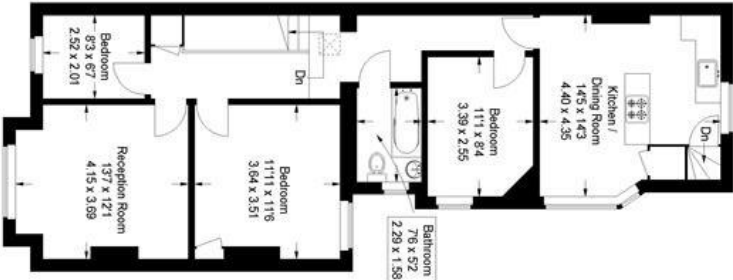
Approximate Gross Internal Area  
926 sq ft / 86 sq m



Ground Floor



Ground Floor



First Floor

Illustration for identification purposes only: measurements are approximate, not to scale.  
Floorplansketch.com © 2014 (1295040)

Energy Efficiency Rating		
Very energy efficient - lower running costs	Current	Potential
A (92-100)		
B (81-91)		
C (69-80)		
D (55-68)	50	58
E (39-54)		
F (21-38)		
G (1-20)		
Not energy efficient - higher running costs		
England & Wales		
EU Directive 2002/91/EC		

For Full EPC information, click [here](#)