

property description

A truly stunning four bedroom Victorian family house situated in a lovely quiet residential road in East Dulwich. The house is full of original features and has been lovingly renovated to a very high standard in the last few years. Upstairs there are four generous double bedrooms plus two further rooms currently been used as a dressing room and study, there is also a large luxury family bathroom with separate walk in shower plus an en-suite to the master bedroom. . Downstairs the front reception has a lovely homely feel with the wood burner, high ceilings and stripped pine flooring. There is also a lovely separate dining room for more formal dinner parties and a large kitchen/breakfast r...

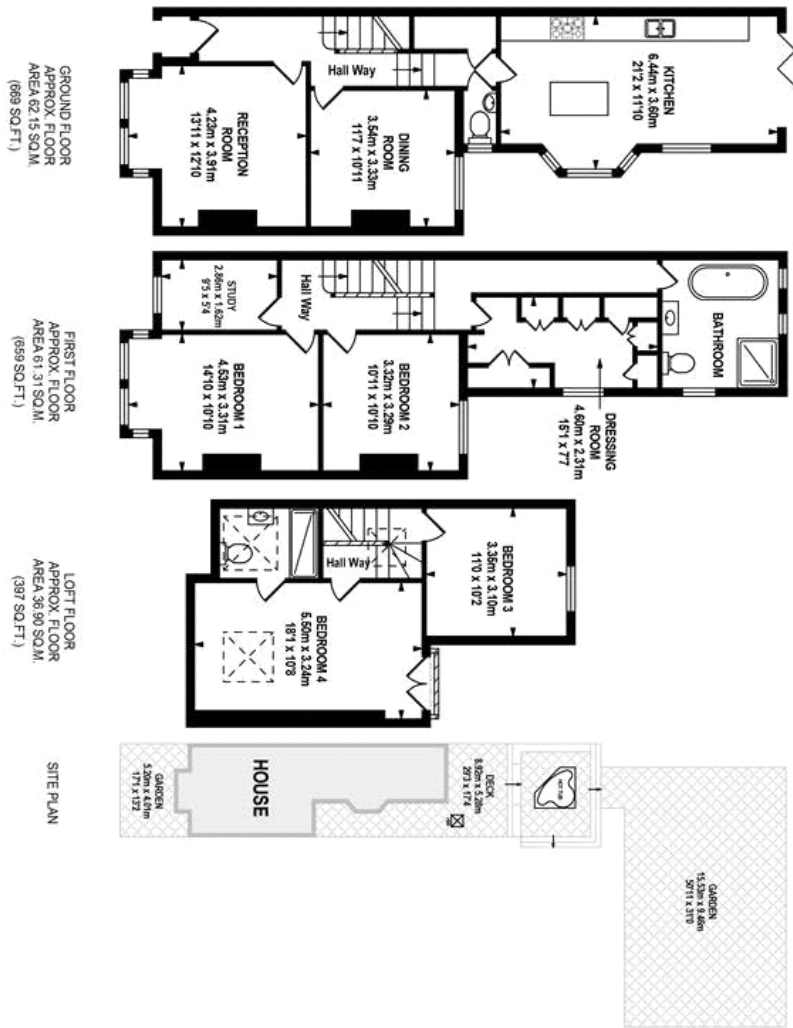
property features

- Completely refurbished in the last few years
- Wood burner in front room
- Downstairs wc
- Stunning family bathroom
- Fireplaces
- Four bedrooms
- En-suite plus dressing room
- Huge Garden with hot tub

ALPS Estates Ltd trading as Pickwick Estates
8 Woodwarde Road Dulwich
London, SE22 8UJ, United Kingdom
Reg No : 4270797
Registered in England

Telephone : 020 3397 1144
Website : <https://www.pickwickestates.co.uk>

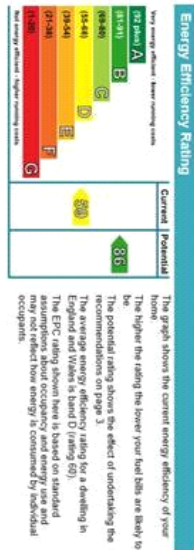




TOTAL APPROX FLOOR AREA: 1603.3 SQ.M. (1726 SQ.FT.)

What every effort is made to accurately reproduce these floor plans, measurements are approximate, not to scale and for illustrative purposes only.

© Pickwick Estates, 2020. 0843242.001



For Full EPC information, click [here](#)