

property description

Oozing character and charm is this very spacious first floor three double bedroom Victorian purpose built maisonette. The overall proportions of this flat are great (1184 sqft or 110 sq m) and there are high ceilings throughout the property. The property benefits from its own entrance and immediately as you enter the property there is a feeling of light and space from a generous hallway illuminated by a skylight overhead. The front reception room is very spacious and retains typical Victorian character with high ceilings, a feature fireplace and large bay sash window which floods the room with light and offers lovely views over the front garden and street. The adjacent room is the largest bedroom, again this room has high ceilings and a sash window. In the heart of the property is a huge kitchen dining room offering enough space for a large dining room table, the kitchen area is fully fitted with all the mod cons and offers plenty of work top space. There is a doorway that leads to a cast iron staircase in the side return which gives access to the private rear garden (approx. 7...

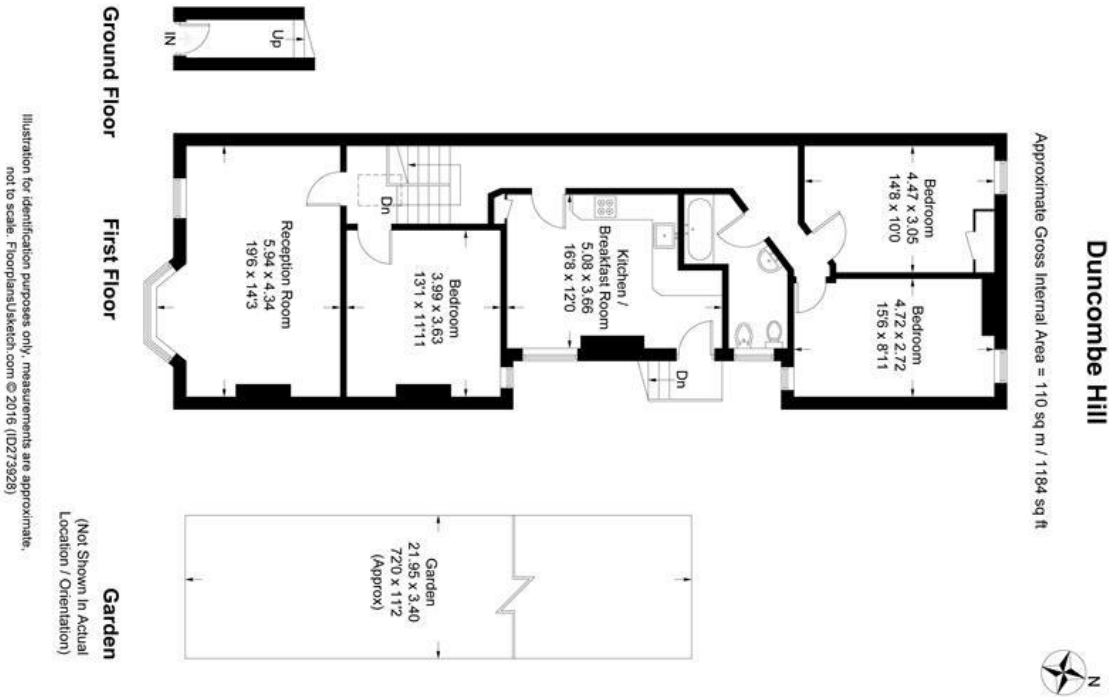
property features

- Very spacious 3 bedroom 1st floor maisonette (1184 sqft)
- Private 72ft garden
- Large kitchen breakfast room
- Spacious reception room
- Family bathroom
- Close to Honor Oak Park station (Overground and London Bridge)

ALPS Estates Ltd trading as Pickwick Estates
47 Honor Oak Park Honor Oak
London, SE23 1EA, United Kingdom
Reg No : 7444750
Registered in England

Telephone : 020 3397 1166
Website : <https://www.pickwickestates.co.uk>





For Full EPC information, click [here](#)