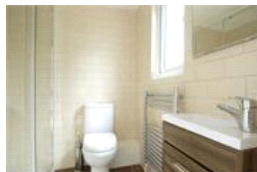
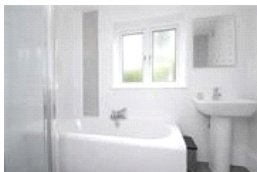
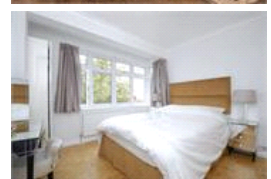
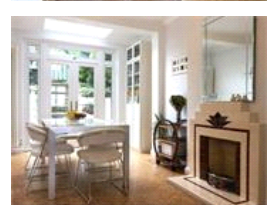
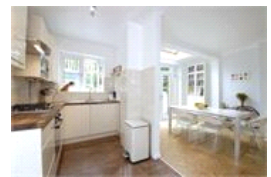


Tewkesbury Avenue, SE23 (4 bedroom House)

£825,000



property description

Perched on top of Forest Hill offering stunning panoramic views of London is this stunning 4 bedroom, 1930's semi-detached family home. The house has been refurbished to a high standard by the current owners who have sympathetically restored some original features. The house also benefits from off street parking, a garage, double glazing throughout, cosy and fashionable cork flooring throughout, side return access and an opportunity to extend over the garage! (Planning permission granted) The house is raised from the road offering a nice feeling of privacy. The front door is shielded by a porch which is perfect for leaving shoes and brollies on those wet days. As you enter the hou...

property features

- 4 bedroom 1930's semi detached family home
- Off street parking and a garage
- Large double reception room
- Newly refurbished kitchen
- 2 bathrooms (one en-suite)
- Private rear garden with stunning views over London

ALPS Estates Ltd trading as Pickwick Estates
47 Honor Oak Park Honor Oak
London, SE23 1EA, United Kingdom
Reg No : 7444750
Registered in England

Telephone : 020 3397 1166
Website : <https://www.pickwickestates.co.uk>

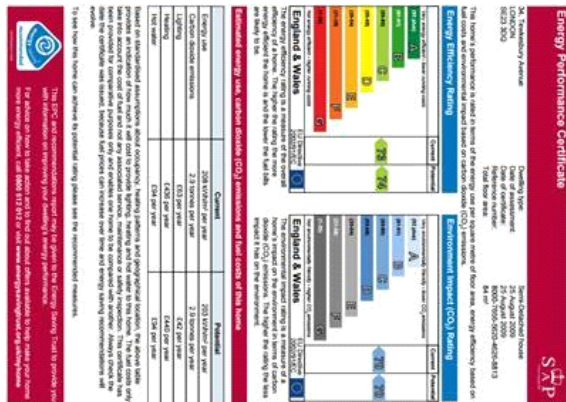




Tewkesbury Avenue

Approximate Gross Internal Area (Including Garage)
1481 sq ft / 137.6 sq m

Illustration for identification purposes only.
measurements are approximate.
Drawn for Pickwick Estates.



For Full EPC Information, click [here](#)