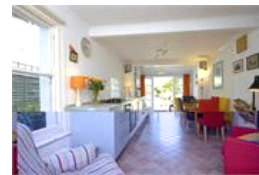
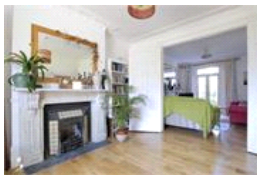
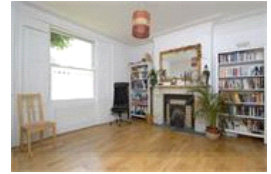


Crystal Palace Road , SE22 (6 bedroom House)

£1,750,000 (OIEO)



## property description

A fantastic six bedroom semi detached house, set over three floors, with six generous double bedrooms, two bathrooms, double reception with beautiful marble fireplaces and a large kitchen/breakfast room leading to a fantastic well stocked large garden. Crystal Palace Road is conveniently located for East Dulwich station (just a few mins walk away) and Lordship Lane with its fantastic shops bars and restaurants. Nearby you also have the Dulwich Village, park and the Picture Gallery as well as many sought after schools.

## property features

- Off street parking for two cars
- Six double bedrooms
- Amazing garden
- Potential to extend (subject to planning)
- New double glazed sash windows
- Large kitchen/breakfast room

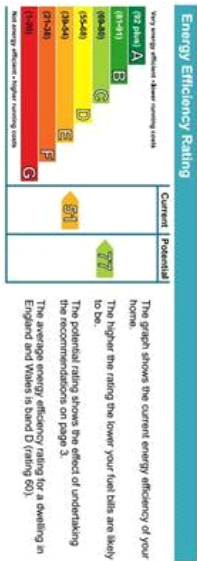




## Crystal palace Road

Approximate Gross Internal Area  
 Ground Floor = 826 sq ft / 76.7 sq m  
 First Floor = 755 sq ft / 70.2 sq m  
 Second Floor = 523 sq ft / 48.6 sq m  
 Total = 2104 sq ft / 195.5 sq m

Illustration for identification purposes only.  
 measurements are approximate.  
 Drawn for Pickwick Estates.



For Full EPC information, click [here](#)