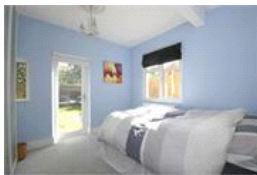
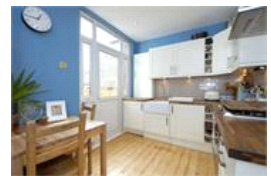


Stondon Park, SE23 (2 bedroom Flat)

£1,450/month



property description

Simply stunning is the perfect description for this charming 2 bedroom ground floor garden flat set within a handsome Victorian terraced house. The garden to the rear is the main feature of this flat, it has been lovingly landscaped by the current owner with a lawn and a patio area for as fresco dining. Surrounding the lawn, the boundaries are full of mature flowering plants and shrubs which brings lovely colours and scents thought the spring and summer. The garden can be accessed from both the Kitchen and the main bedroom from the flat which makes the flat light and airy. The flat is in in excellent decorative with plenty of period features and double glazing throughout. Briefly compri...

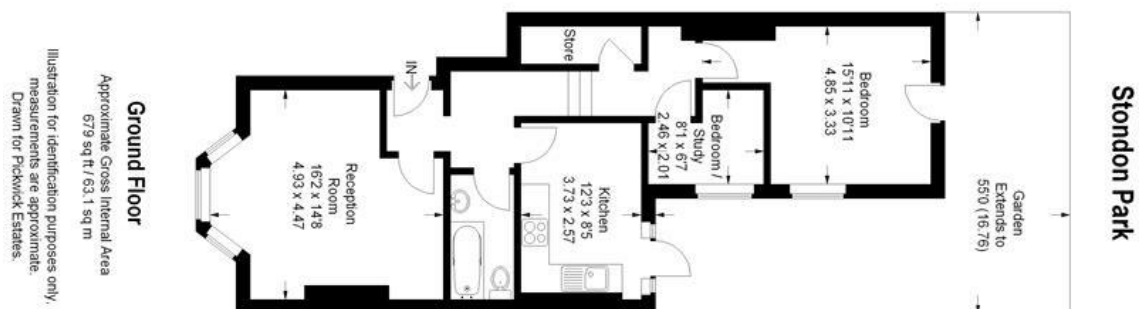
property features

- Superb 2 bedroom GARDEN flat in a Victorian house
- Lovely well maintained landscaped rear garden
- 1 double bedroom, 1 single bedroom
- Mid September 2021
- Victorian style bathroom
- Good size kitchen
- Close to Honor Oak Park station (Overground and London Bridge)

ALPS Estates Ltd trading as Pickwick Estates
47 Honor Oak Park Honor Oak
London, SE23 1EA, United Kingdom
Reg No : 7444750
Registered in England

Telephone : 020 3397 1166
Website : <https://www.pickwickestates.co.uk>





For Full EPC Information, click [here](#)