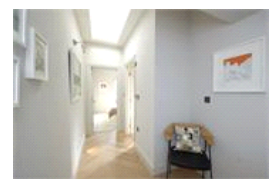
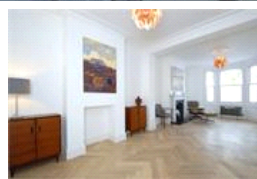
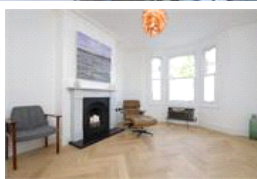
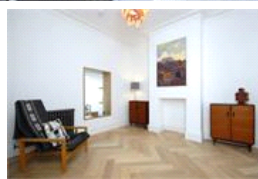
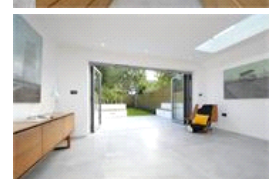


Hansler Road, SE22 (4 Bedroom House)

£1,300,000



## property description

A fantastic, newly refurbished, mid terrace family house in a central location in East Dulwich. The property has been refurbished to an extremely high standard, with the attention to detail, second to none. downstairs there is a large double reception room with working fireplace, stunning newly fitted modern style kitchen with bi folding doors to a large garden, plus a handy downstairs wc. Upstairs there are four double bedrooms and two beautiful bathrooms. Hansler Road is located right in the heart of East Dulwich with the station just a few minutes walk away. Nearby there are local sought after schools and you are right on top of all the shops bars and restaurants that East Dulwich has to...

## property features

- Stunning interior
- Four double bedrooms
- Two bathrooms
- Fantastic garden room with electricity
- Central location
- Chain free

ALPS Estates Ltd trading as Pickwick Estates  
8 Woodwarde Road Dulwich  
London, SE22 8UJ, United Kingdom  
Reg No : 4270797  
Registered in England

Telephone : 020 3397 1144  
Website : <http://www.pickwickestates.co.uk>



# Hansler Road



= Reduced headroom below 1.5 m / 50  
 Approximate Gross Internal Area (Excluding Eaves)  
 1756 sq ft / 163.1 sq m  
 Illustration for identification purposes only.  
 measurements are approximate.  
 Drawn for Pickwick Estates.



For Full EPC information, click [here](#)