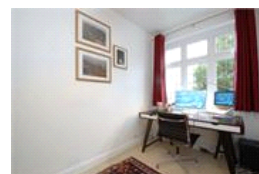
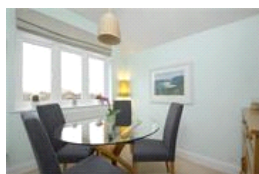
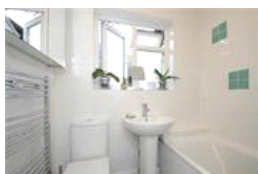
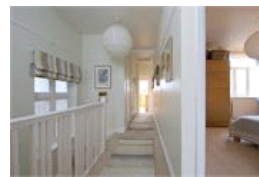


Underhill Road , SE22 (3 bedroom Flat)

£525,000



## property description

Pickwick Estates are please to offer this beautiful 3 bed flat to the market. Immaculately decorated throughout and with the share of freehold and a west facing garden brings all together a fantastic purchase for a first time buyer, sharers or even someone looking at downsizing. This property has three bedrooms (one is currently been used as a dining room) a lovely bright reception room and a modern kitchen and bathroom. Underhill Road is conveniently located for transport to central London with East Dulwich, Peckham Rye and Honor Oak stations nearby as well as many buses. There is a great parade of shops just around the corner offering everything you will need on a day to day basis and of c...

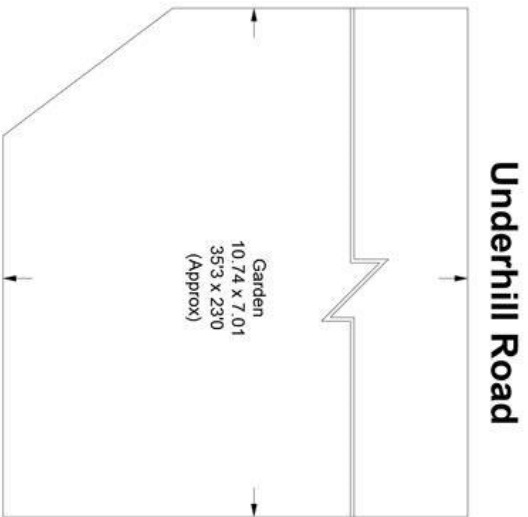
## property features

- Share of freehold
- Loft space
- West facing garden
- 2/3 bedrooms
- Immaculately presented
- East Dulwich and Peckham Rye BR nearby

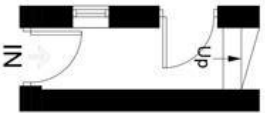
ALPS Estates Ltd trading as Pickwick Estates  
8 Woodward Road Dulwich  
London, SE22 8UJ, United Kingdom  
Reg No : 4270797  
Registered in England

Telephone : 020 3397 1144  
Website : <https://www.pickwickestates.co.uk>





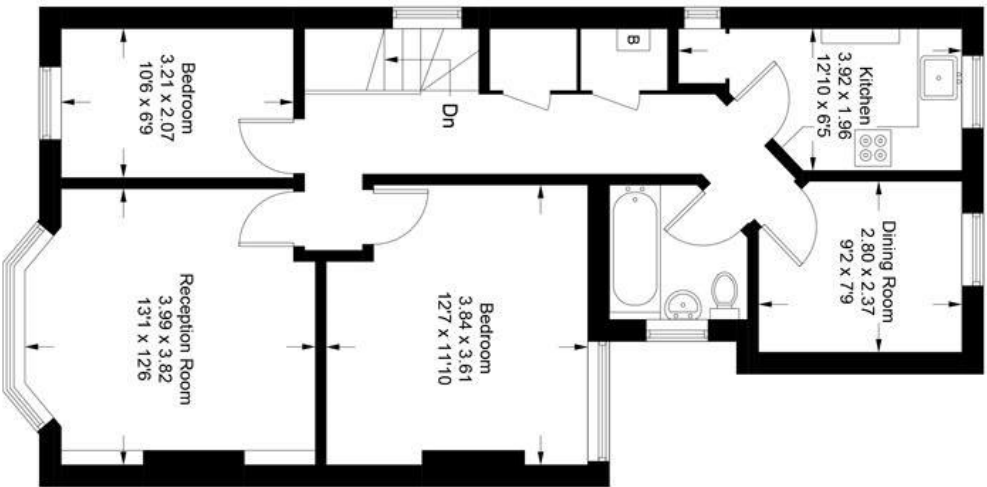
(Not Shown In Actual  
Location /Orientation)



## Ground Floor

Approximate Gross Internal Area = 69.1 sq m / 744 sq ft

Illustration for identification purposes only.  
measurements are approximate.  
Drawn for Pickwick Estates



## Energy Efficiency Rating

Very energy efficient - lower running costs		
(92 plus) A		
(81-91) B		
(69-80) C		
(55-68) D		
(39-54) E		
(21-38) F		
(1-20) G		
Not energy efficient - higher running costs		
Current	Potential	
66	77	

For Full EPC information, click [here](#)