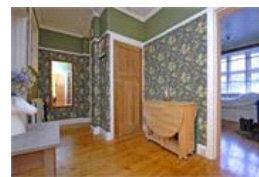
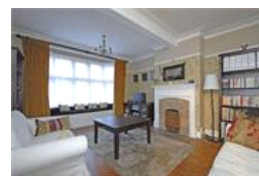


Fountain Court, SE26 (2 bedroom Flat)

£1,450/month



**Photo
coming
soon**

**Photo
coming
soon**

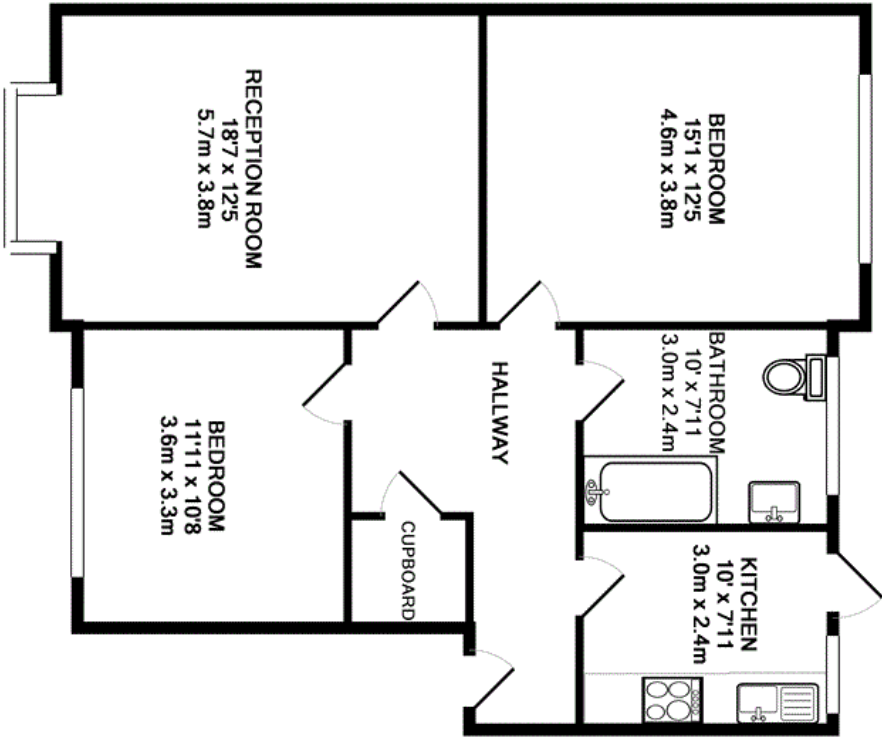
property description

Set on the ground floor of this stunning Art Deco mansion block is this spacious 2 double bedroom flat with original fire places, wooden floors and plenty of character throughout. The property briefly comprises Large reception room with bay window, fully fitted kitchen, stylish modern bathroom, double glazed throughout and central heating. Fountain Court is surrounded by neatly manicured communal gardens and is moments away from Crystal Palace Park, a high street with local shops and both Penge East and Penge West are the nearest stations, in addition there is a fantastic 24 hr bus route that will whisk you into central London. Available September 2021.

property features

- Beautiful Ground Floor 1930's Art Deco Mansion Apartment
- Located in one of Sydenhams Premier Rd's
- 2 DOUBLE Bedrooms
- Available September 2021
- Modern Fitted Kitchen and Bathroom
- Communal Gardens
- Closest rail station is Penge East or Penge West, great 24 hr bus route 176

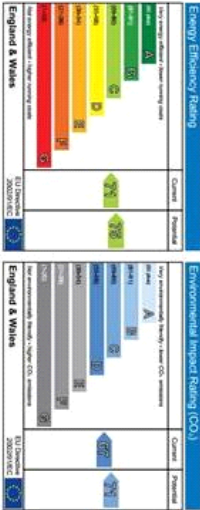




TOTAL APPROX. FLOOR AREA 75.9 SQ.M. (817 SQ.FT.)

Whilst every attempt has been made to ensure the accuracy of the floor plan contained here, measurements of doors, windows, rooms and any other items are approximate and no responsibility is taken for any error, omission, or mis-statement. This plan is for illustrative purposes only and should be used as such by any prospective purchaser. The services, systems and appliances shown have not been tested and no guarantee as to their operability or efficiency can be given

Made with Metropix ©2009



For Full EPC information, click [here](#)