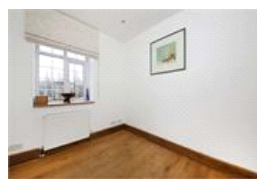
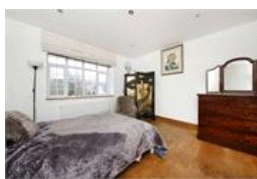
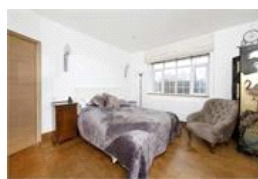
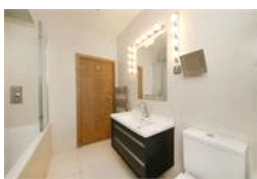
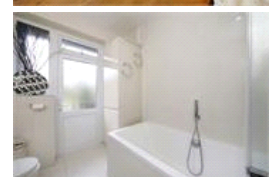
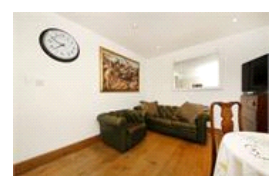


Vale Lodge, SE23 (2 Bedroom Flat)

£1,150/month



property description

A beautifully presented two bedroom first floor flat with a modern kitchen and bathroom, located just 0.1 miles of Forest Hill station and town centre. Available now, the property has been refurbished to a high standard and boasts a balcony and communal grounds to the rear.

property features

- Two bedroom first floor flat
- Balcony and access to communal gardens
- Modern Kitchen
- Modern bathroom
- Fully fitted kitchen
- Only 0.1 miles from Forest Hill station, Overground & London Bridge connections

Vale Lodge, SE23 (2 Bedroom Flat)

£1,150/month

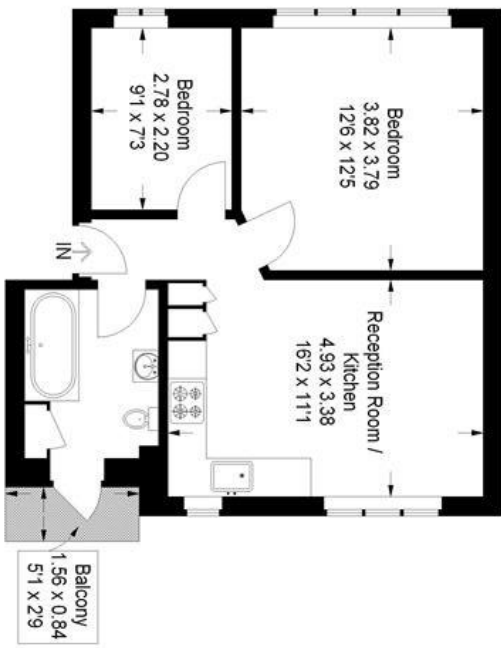
ALPS Estates Ltd trading as Pickwick Estates
 47 Honor Oak Park Honor Oak
 London, SE23 1EA, United Kingdom
 Reg No : 7444750
 Registered in England

Telephone : 020 3397 1166
 Website : <http://www.pickwickestates.co.uk>



Perry Vale, SE23

Approximate Gross Internal Area
47.9 sq m / 516 sq ft



First Floor

This plan is for layout guidance only. Not drawn to scale unless stated. Windows and door openings are approximate. Whilst every care is taken in the preparation of this plan, please check all dimensions, shapes and compass bearings before making any decisions reliant upon them. (ID:305330)

For Full EPC information, click [here](#)