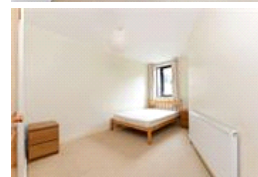
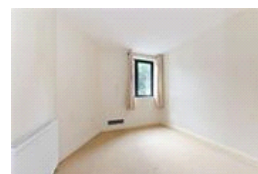
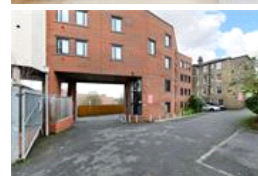


Bird in Hand Mews, SE23 (2 bedroom Flat)

£1,200/month



**Photo
coming
soon**

**Photo
coming
soon**

**Photo
coming
soon**

**Photo
coming
soon**

**Photo
coming
soon**

property description

Offered to the market in excellent condition is this TWO DOUBLE BEDROOM ground floor flat superbly located in the heart of Forest Hill, just 0.1 of a mile away from Forest Hill station in a modern development. Available part furnished, this would suit a professional couple or professional sharers. Available now.

property features

- 2 Double bedroom ground floor flat
- Offered to the market in good condition
- Modern Kitchen
- Bathroom
- Reception room
- Very close to Forest Hill station 0.1m

Bird in Hand Mews, SE23 (2 bedroom Flat)

£1,200/month

