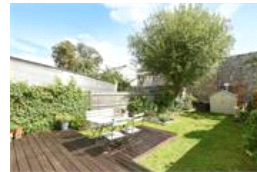
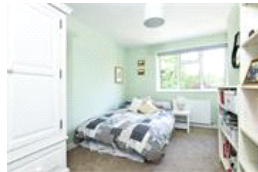
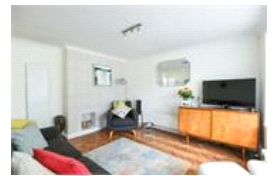


Elmworth Grove, SE21 (3 bedroom House)

£699,950



## property description

A superb three double bedroom modern house in a lovely quiet road in West Dulwich just minutes away from the shops etc. Downstairs there is fantastic living space with a large reception room and kitchen breakfast room as well as a handy cloakroom. The garden is South facing and of a generous size. Upstairs there are three double bedrooms and two bathrooms . Potential to extend, subject to planning. Elmworth Grove is quiet residential road just off the main area of West Dulwich and is a short walk away from West Dulwich station. Dulwich Village is nearby as well as some of the most sought after schools in the country.

## property features

- Large south facing garden
- Three large double bedrooms
- Two bathrooms plus downstairs cloakroom
- Close to West Dulwich station
- Large living area
- Fantastic location



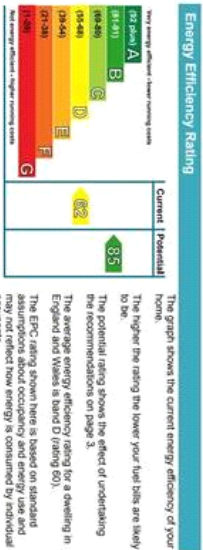
# Elmworth Grove, London, SE21

APPROX. GROSS INTERNAL FLOOR AREA 1170 SQ FT 108.7 SQ METRES



Whilst every attempt has been made to ensure the accuracy of the floor plan contained here, measurements of doors, windows and rooms are approximate and no responsibility is taken for any error, omission or misstatement. These plans are for representation only and do not constitute an offer of any property. No guarantee is given on the total square footage of the property if quoted on this plan. Any figure given is for initial guidance only and should not be relied on as a basis of valuation.

Copyright nichecom.co.uk 2017 Produced for Pickwick REF : 210955



For Full EPC Information, click [here](#)