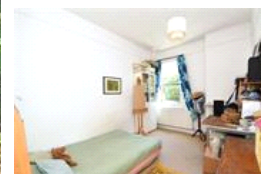
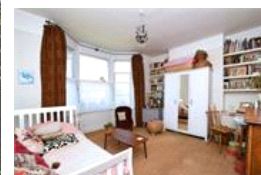


Brockley View , SE23 (3 bedroom Flat)

£575,000 (OIEO)



property description

Sold as chain free is this fantastic spacious ground floor three-bedroom Victorian conversion maisonette sold with a Share of freehold and access to its own secluded mature rear garden. As you come through your own private entrance, this property is like a tardis, offering a huge amount of space throughout. To the front there is a light bright reception room with a large bay window overlooking the shared front garden, next door there is the master bedroom which has high ceilings, a lovely Victorian feature fireplace and a window overlooking the side return. Further down the corridor there is a massive kitchen/breakfast room with a side door leading to the garden. To the rear there are two double bedrooms and a family bathroom with separate WC. The side access lead you to your own secluded rear garden which is completely private and mature with plenty of plant and bird life. Brockley View is close to Honor Oak Park station where there are regular services to London Bridge (around 15mins) as well as London Overground services to Shoreditch and Highbury and Islington. There i...

property features

- Spacious 3 double bedroom garden maisonette
- Large reception room
- Kitchen dining room
- CHAIN FREE
- Bathroom and separate WC
- Private rear garden with mature plants and plenty of bird life
- Close to Honor Oak Park station,
- Close to Blythe Hill Fields

ALPS Estates Ltd trading as Pickwick Estates
47 Honor Oak Park Honor Oak
London, SE23 1EA, United Kingdom
Reg No : 7444750
Registered in England

Telephone : 020 3397 1166
Website : <https://www.pickwickestates.co.uk>





For Full EPC information, click [here](#)