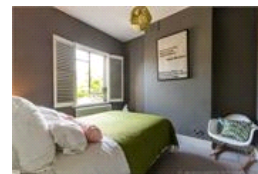
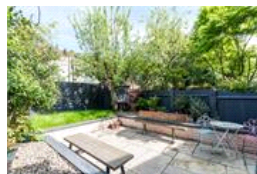
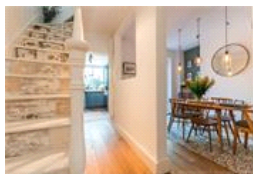
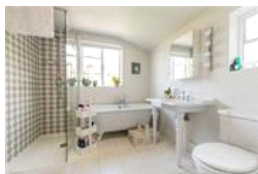
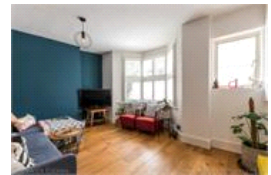


Rodwell Road, SE22 (2 bedroom Flat)

£635,000



property description

A truly stunning Victorian Maisonette in a very quiet residential road in the heart of East Dulwich. The property is immaculately decorated and presented to a very high standard throughout. Arranged over the raised ground floor, there are two bedrooms (one of which has fully fitted wardrobes) and a beautifully presented bathroom with a separate walk-in shower. Leading down to the lower level you will be met with a charming reception room, separate dining with French doors leading out to the garden, separate kitchen which also leads out to the delightful garden. Rodwell road is a short stroll from Lordship Lane which boasts some fantastic shops, pubs and restaurants not forgetting the g...

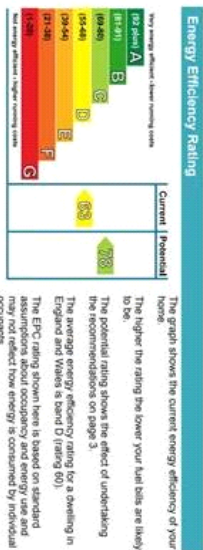
property features

- Long lease
- 2 double Bedrooms
- Reception room and separate dining room
- Stunning views over London
- Delightful garden
- Stylishly decorated throughout
- Large luxurious bathroom with separate walk in shower

ALPS Estates Ltd trading as Pickwick Estates
8 Woodwarde Road Dulwich
London, SE22 8UJ, United Kingdom
Reg No : 4270797
Registered in England

Telephone : 020 3397 1144
Website : <https://www.pickwickestates.co.uk>





For Full EPC Information, click [here](#)