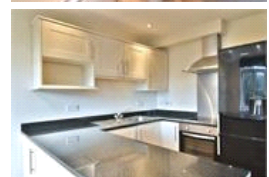
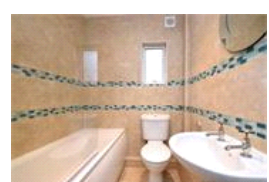


Galpins Road , CR7 (1 bedroom Flat)

£950/month



property description

Lovely one bedroom flat on the first floor of this 1930's house conveniently located close to local amenities. The flat is offered to the market in good condition and is ready to move into. Briefly comprising open planned kitchen reception room, kitchen fitted with granite worktops and good appliances, a modern fitted bathroom, good size double bedroom, double glazing, entryphone system and an alarm. The nearest stations are Thornton Heath and Norbury. Available immediately.

property features

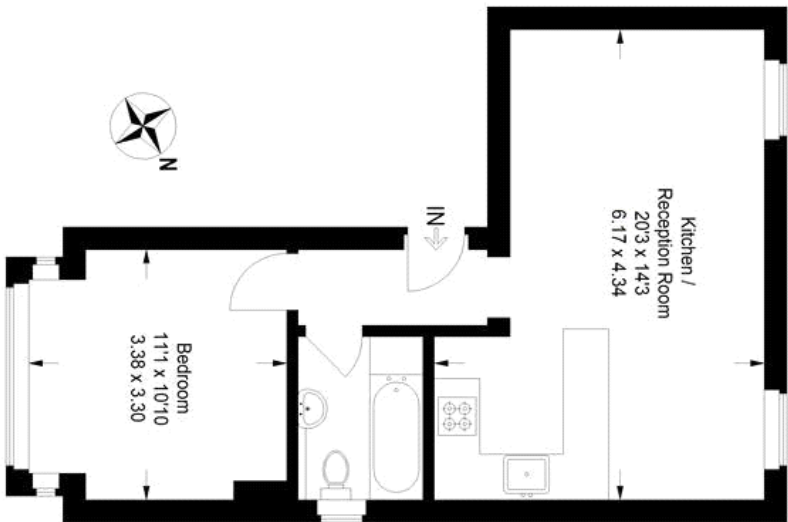
- Lovely one bedroom flat
- Offered in excellent condition
- First floor of a 1930's house
- Integrated alarm system and double glazing
- Open planned kitchen reception room
- Modern bathroom

Galpins Road , CR7 (1 bedroom Flat)

£950/month



Galpins Road



First Floor

Approximate Gross Internal Area

445 sq ft / 41.3 sq m

Illustration for identification purposes only.
measurements are approximate.
Drawn for Pickwick Estates.

For Full EPC information, click [here](#)