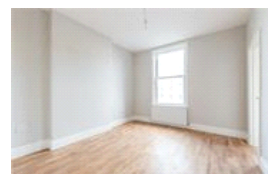
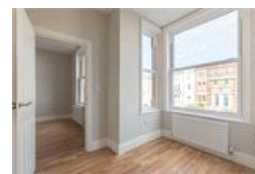
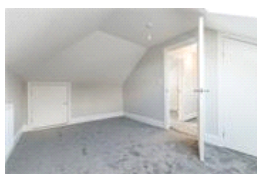
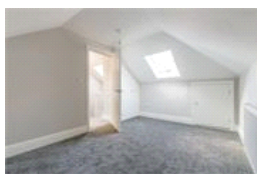
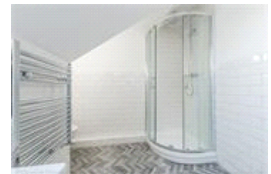
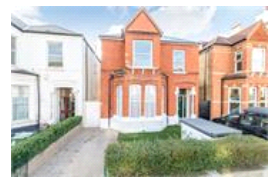


Rosendale Road , SE21 (2 bedroom Flat)

£1,500/month



property description

The last lick of paint has just dried on the wall on this stunning top floor two double bedroom Victorian conversion flat in a very popular road in west Dulwich. Everything is brand new and the flat is ready to move straight into. The kitchen is fully fitted and has plenty of space for a table and chairs and the large shower room has been stylishly decorated and has a heated towel rail. The property is ideal for sharers as it is split level to give you privacy when you need it and is just a short walk to West Dulwich station. The flat is available straight away.

property features

- Two Double bedrooms
- Modern shower room
- Full fitted kitchen
- Available immediately
- Close to West Dulwich station
- Unfurnished

ALPS Estates Ltd trading as Pickwick Estates
8 Woodward Road Dulwich
London, SE22 8UJ, United Kingdom
Reg No : 4270797
Registered in England

Telephone : 020 3397 1144
Website : <https://www.pickwickestates.co.uk>





FIRST FLOOR
APPROX. FLOOR
AREA 27.68 SQ.M.
(296 SQ.FT.)



SECOND FLOOR
APPROX. FLOOR
AREA 40.69 SQ.M.
(438 SQ.FT.)

TOTAL APPROX. FLOOR AREA 68.37 SQ.M. (736 SQ.FT.)

Whilst every effort is made to accurately reproduce these floor plans, measurements are
taken from the finished floor level and are not intended to be used for legal purposes.
© Duwack Energy Assessors Ltd. www.duack.co.uk



For Full EPC information, click [here](#)