

City View Court, SE22 (1 bedroom Flat)

£325,000 (OIEO)



property description

GUIDE PRICE £325,000 - £350,000 'Light, bright, spacious and ready' accurately describes this truly delightful, adaptable one-bedroom flat, equally ideal as a London pad for a business executive, a starter home for a young couple, or as a first-time buy. The multi-function reception room is an excellent size, enabling defined 'living' sections for all lifestyles – from TV viewing, to dining, to head-down work production for the remote executive. The nearby Dulwich Picture Gallery, Horniman Museum and swift access to all London has to offer, also makes this secure home perfect for the 'on-the-go' business executive, or even the inquisitive explorer looking for a near-to London second home or retirement pad. You can travel easily, including to central London, via numerous bus routes and seven near-by stations - West Dulwich, Honor Oak, East Dulwich, North Dulwich, Forest Hill, Denmark Hill and Peckham Rye. Meanwhile, you get a fully-fitted kitchen and modern bathroom with shower and heated towel rail, plus the good-sized double bedroom has a built-in wardrobe with ample room for two. C...

property features

- Ready to move straight in – equally perfect as a
- Large, multi-purpose reception room, perfect

ALPS Estates Ltd trading as Pickwick Estates
47 Honor Oak Park Honor Oak
London, SE23 1EA, United Kingdom
Reg No : 7444750
Registered in England

Telephone : 020 3397 1166
Website : <https://www.pickwickestates.co.uk>



- multiple bus routes
- Stunning views over London

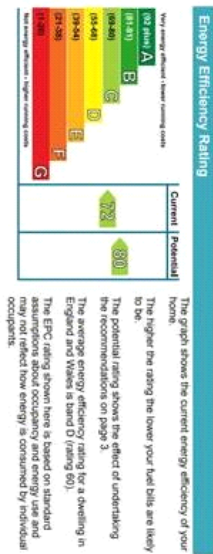
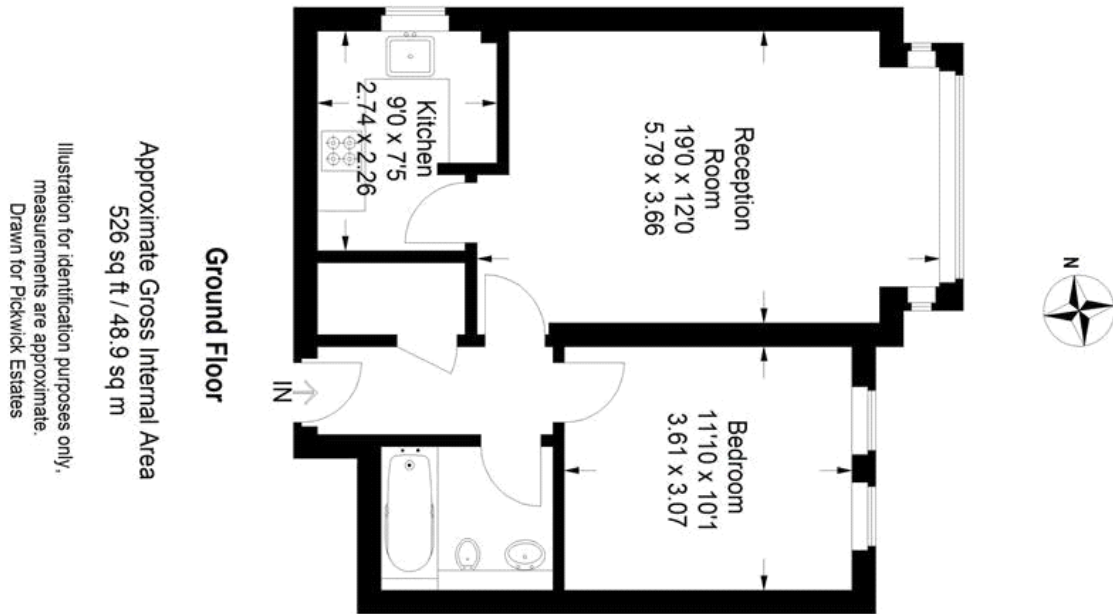
- Allocated off street parking



020 3397 1166

City View Court, SE22 (1 bedroom Flat)

£325,000 (OIEO)



For Full EPC Information, click [here](#)