



property description

Set on the first floor of this lovely Victorian house is a light and spacious, well maintained 2 double bedroom flat. The property is conveniently located moments from Honor Oak Park train station and an abundance of local amenities. There is also an additional benefit of purchasing the loft space from the freeholder. The entrance to the property is on the ground floor where there is a landing area for shoes and coats with steps leading upstairs. At the front of the house, spanning across its whole width, is a spacious reception room with two, recently fitted, double glazed windows, one of which is a large bay that illuminates the room with natural light. The 2 double bedrooms are of equal size and both quietly tucked away - one in the middle of the flat and one to the rear overlooking gardens. There is a fully fitted bathroom that is neutrally decorated and has a combination bath and shower. The kitchen has been newly fitted recently, is in excellent condition and includes a new boiler. The cupboards are white gloss with black laminate worktops. The kitchen also inc...

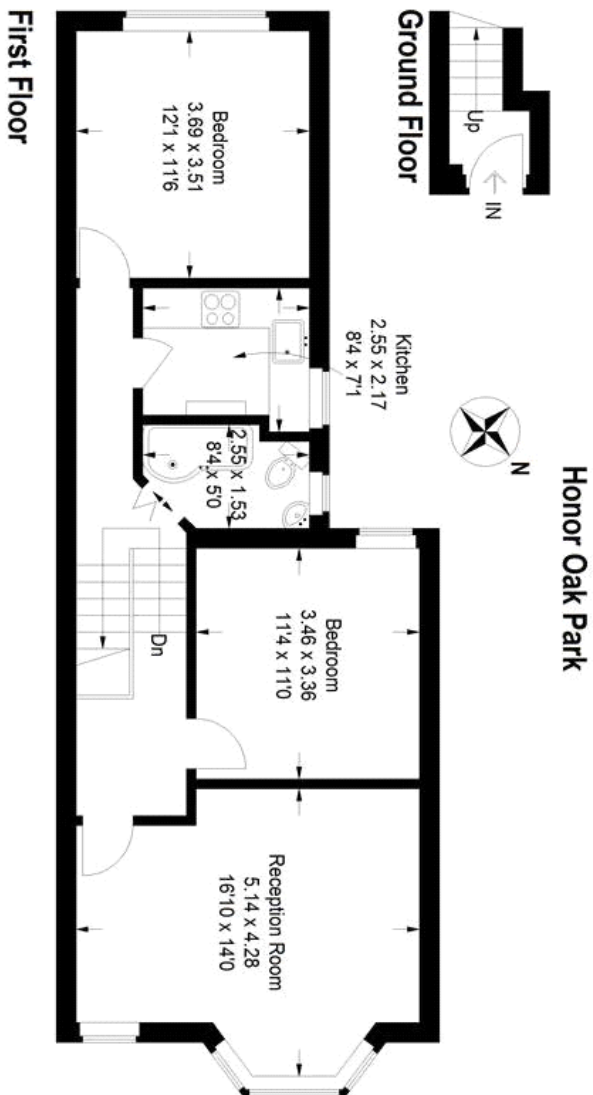
property features

- Equally sized 2 double bedroom
- 1st floor flat
- Neutrally decorated bathroom
- Light and spacious reception room
- Well maintained fully fitted kitchen
- Close to Honor Oak Park station and parade of shops
- Available to view now

ALPS Estates Ltd trading as Pickwick Estates
47 Honor Oak Park Honor Oak
London, SE23 1EA, United Kingdom
Reg No : 7444750
Registered in England

Telephone : 020 3397 1166
Website : <https://www.pickwickestates.co.uk>





Approximate Gross Internal Area = 67 sq m / 721 sq ft

Illustration for identification purposes only,
measurements are approximate.
Drawn for Sinclair Hammetton



For Full EPC information, click [here](#)