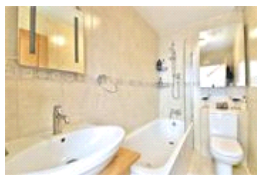
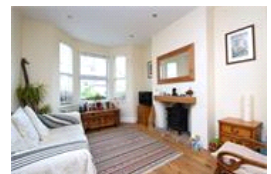
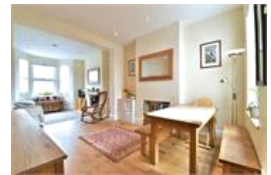


Blythe Hill Lane, SE6 (4 bedroom House)

£2,000/month



## property description

Available start of September - Ideally a 12 month fixed rental for families or professional couples. Utterly charming 4 bedroom family home with a south facing garden in this lovely Victorian Terrace. Blythe Hill Lane is a peaceful cul de sac leading directly to the green open spaces of Blythe Hill fields - great for weekend activities in the park! The house has been well maintained by the current owner with great curb appeal from a lovely low maintenance front garden. Inside is just as impressive - a lovely double reception with a large sash bay window to the front with a dining area to rear and a log burner in the fireplace which will come into its own in the winter months. To t...

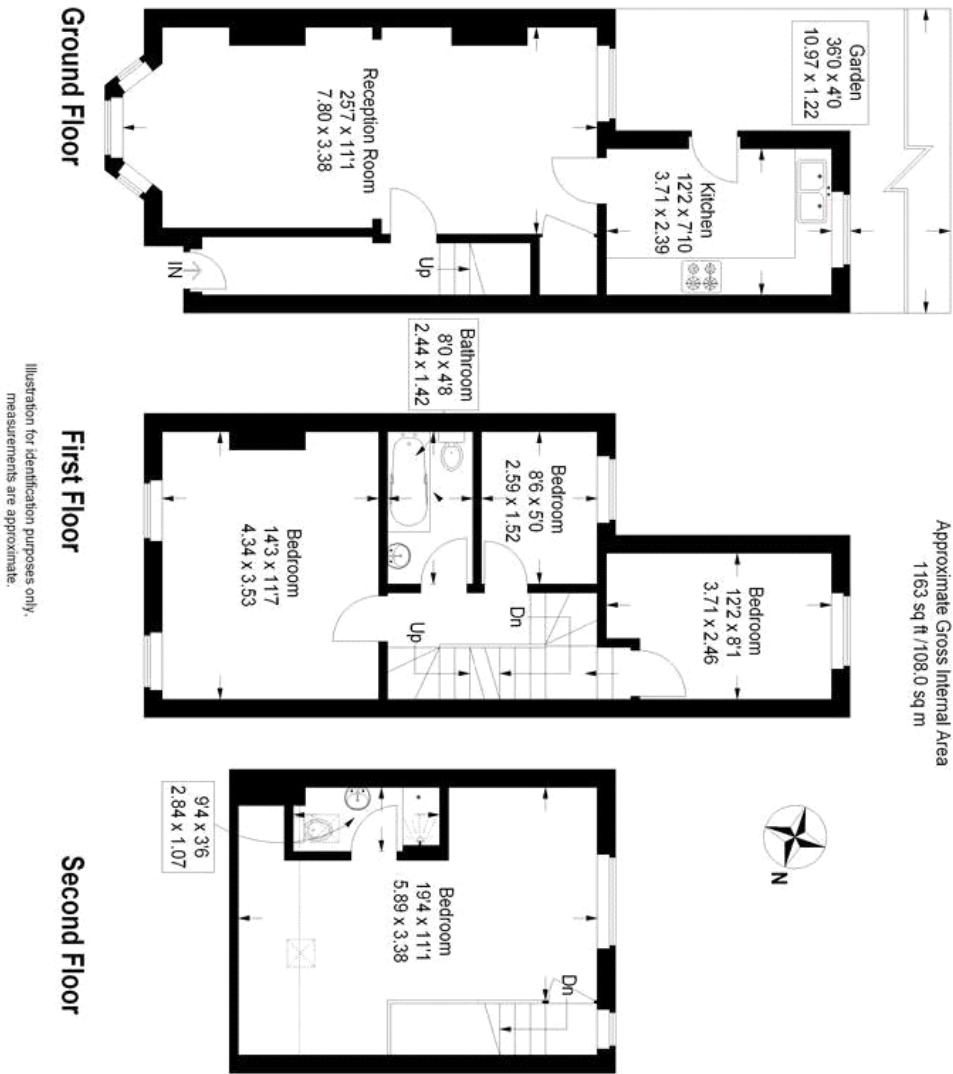
## property features

- 4 bedroom Victorian family home
- Quiet cul-de-sac
- Double reception room with dining area
- Family bathroom
- Fully fitted Kitchen
- Sunny SOUTH facing garden
- Green open space of Blythe Hill Lane at the end of the road
- Ensuite shower room

ALPS Estates Ltd trading as Pickwick Estates  
47 Honor Oak Park Honor Oak  
London, SE23 1EA, United Kingdom  
Reg No : 7444750  
Registered in England

Telephone : 020 3397 1166  
Website : <https://www.pickwickestates.co.uk>





For Full EPC Information, click [here](#)