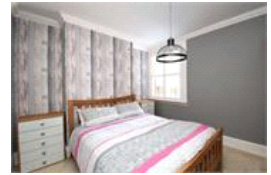


Stondon Park, SE23 (2 bedroom Flat)

£475,000



## property description

A charming two bedroom Victorian ground floor flat with a private rear garden and a share of freehold and offered chainfree. The flat is in great location, a short walk from Honor Oak Park and Crofton Park rail stations as well as an array of local amenities and a good selection of schools. The property has an imposing red brick facade and is bordered by a mature privet hedge offering privacy from the street. The front room features a period fireplace and original floorboards, cornicing, double glazing as well as stunning window shutters. The bedrooms are located in the middle of the property. The bedrooms are decorated to a high standard, once again following the Victorian theme. The family bathroom between both bedrooms is a generous size with a white 3 piece suite. The bathroom has been designed to create a luxurious and sophisticated room and also benefits from a window to allow light and air flow. At the back of the property is the kitchen diner which is open planed, perfect for entertaining guests! Large double-glazed patio doors illuminate this room and opens directly ...

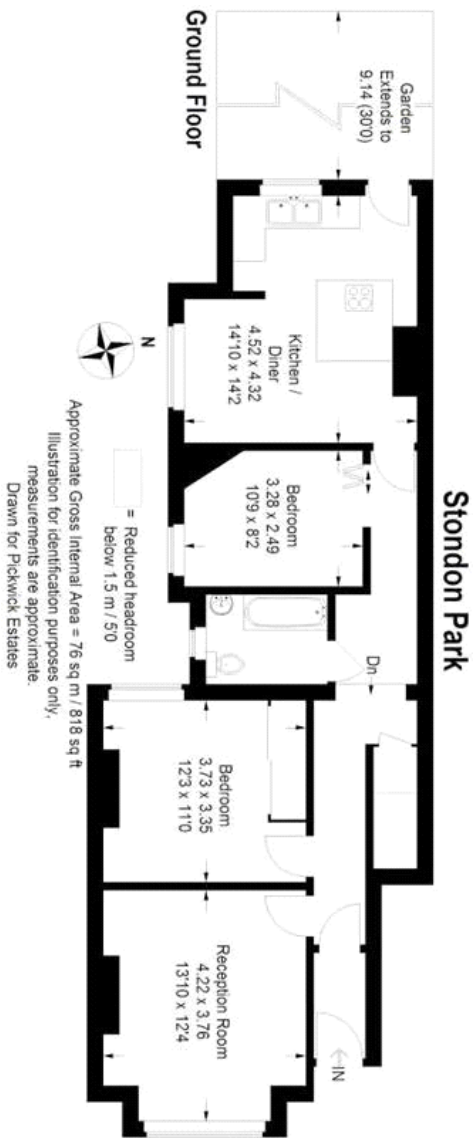
## property features

- Ground floor flat
- West facing rear garden
- Large reception room
- Open plan Kitchen
- Original features
- 2 Bedrooms
- Modern bathroom
- Chain free

ALPS Estates Ltd trading as Pickwick Estates  
47 Honor Oak Park Honor Oak  
London, SE23 1EA, United Kingdom  
Reg No : 7444750  
Registered in England

Telephone : 020 3397 1166  
Website : <https://www.pickwickestates.co.uk>





For Full EPC information, click [here](#)