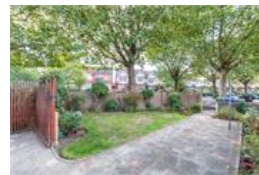
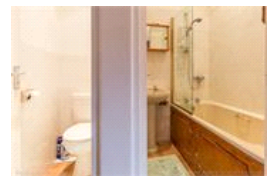
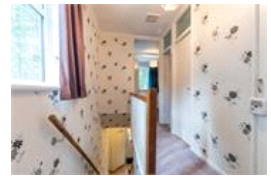


Rycott Path, SE22 (2 Bedroom House)

£475,000



property description

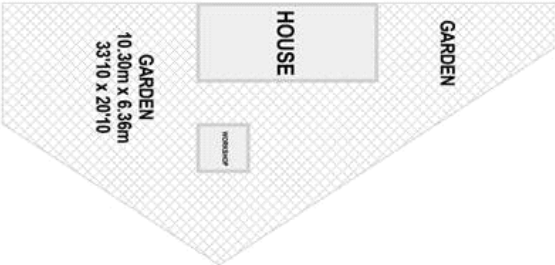
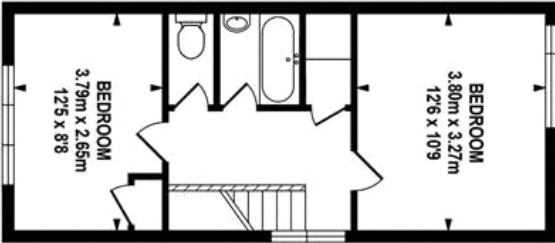
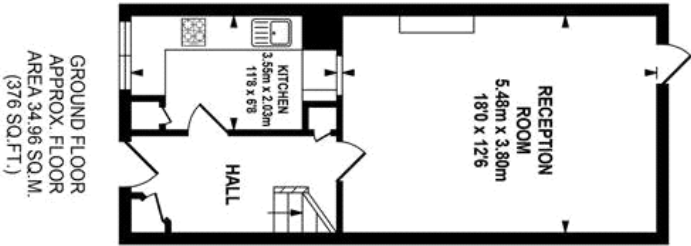
Situated just off of Lordship Lane and offered chain free is this great two bedroom house built circa 1970.

Downstairs there is a large reception room leading out to a South west facing garden plus a fitted kitchen and a large hallway. Upstairs are two good size double bedrooms and a bathroom. Outside the property to the front and around the side of the house there is further large garden area plus a handy workshop. The property is chain free and available for viewings straight away.

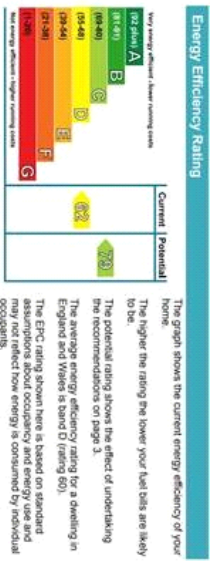
property features

- Chain free
- Fantastic front back and side gardens
- Workshop
- Close to transport
- Two double bedrooms
- Fitted kitchen
- Short walk to Dulwich park
- Close to shops, bars and restaurants





TOTAL APPROX. FLOOR AREA 70.3 SQ.M. (757 SQ.FT.)
Whilst every effort is made to accurately reproduce these floor plans, measurements are approximate, not to scale and for illustrative purposes only.
© Dulwich Energy Assessors Ltd. www.dea-ld.co.uk



For Full EPC information, click [here](#)