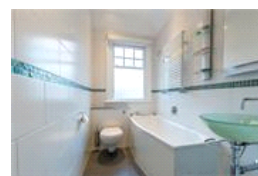
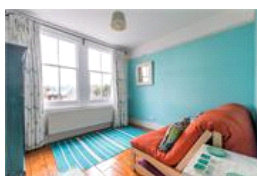
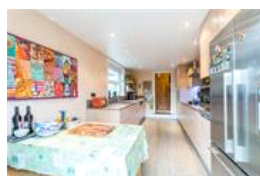
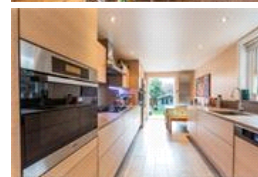
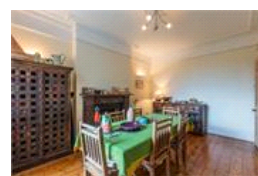
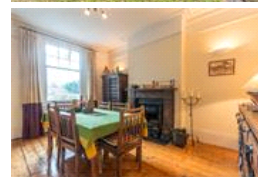
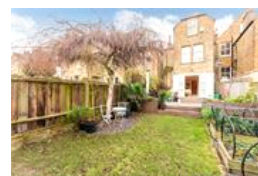


Thornlaw Road, SE27 (4 Bedroom House)

£2,500/month



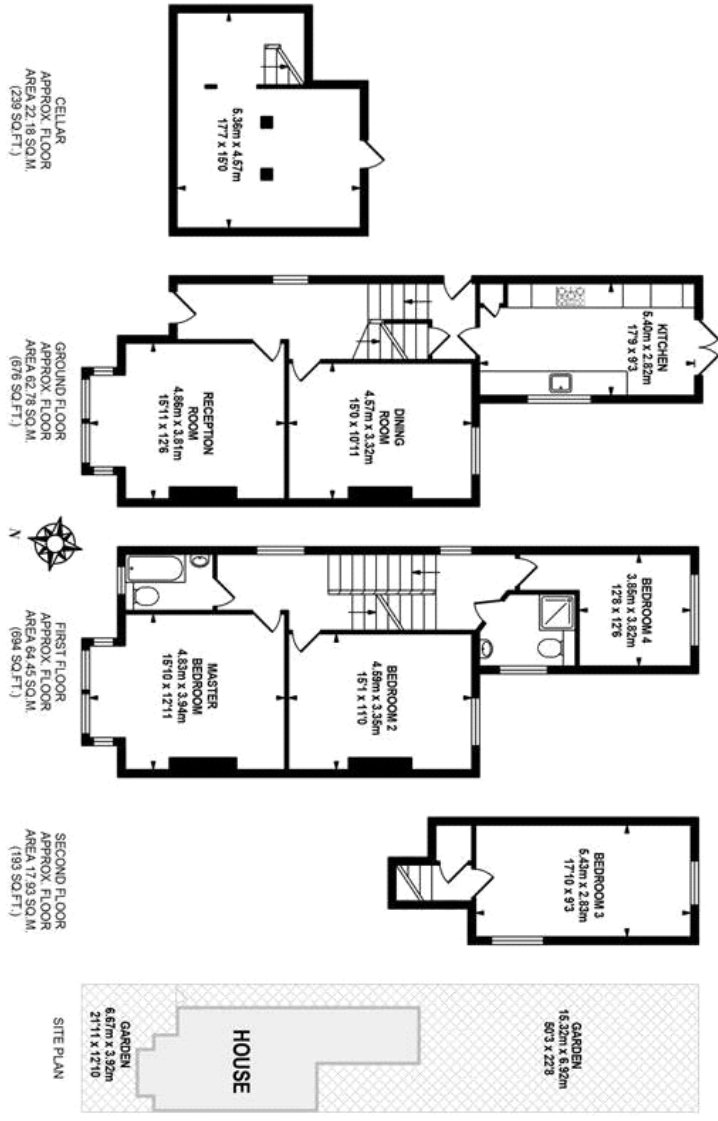
property description

A really beautiful four double bedroom family house with ample living space. Featuring a separate dining and reception room large kitchen and two bathrooms and a handy cellar. The property is ideally located for West Norwood station as well as many buses and also the high street that has a wealth of shops. Families preferred. Available from the end of Jan could possibly be earlier.

property features

- Sunny South facing garden
- West Norwood station nearby
- Great bus links to Central London
- Dining room
- Four double bedrooms
- Cellar
- Large kitchen
- Close to High Street

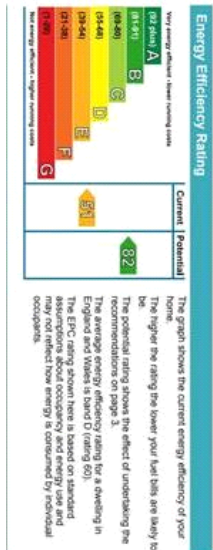




pickwick estates

TOTAL APPROX FLOOR AREA 167.34 SQ.M. (1801 SQ.FT.)

While every effort is made to accurately reproduce these floor plans, measurements are approximate and not to scale and for planning purposes only.
©Pickwick Energy Assessors Ltd. 2020. 08/23/2020



For Full EPC information, click [here](#)