

Stondon Park, SE23 (2 bedroom Flat)

£1,750/month



property description

Pickwick Estates is proud to market this extremely well presented two double bedroom ground floor maisonette with a private garden. At the front of the property you will find two generous sized double bedrooms located back to back, both benefiting from high ceilings. At the centre of the property there is a family bathroom recently finished to a very high specification. At the back of the property is a newly extended, stunning modern kitchen/living room which is big enough for a dining room table, chairs and sofa. Large bi fold doors give access to an easily maintainable, private patio garden. The property is within close proximity to both Honor Oak Train Station (Overground and London Bridg...

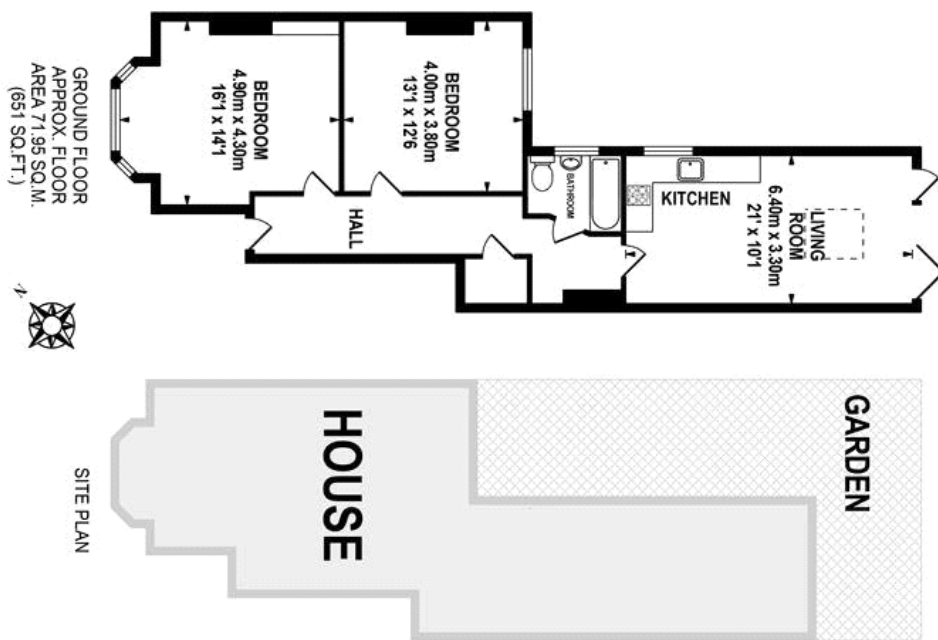
property features

- Ground floor flat
- Two double bedrooms
- Decorated to a very high spec.
- Available November
- Private garden to rear
- Newly extended Kitchen reception room
- Available to view now.
- Close proximity to Honor Oak and Crofton

ALPS Estates Ltd trading as Pickwick Estates
47 Honor Oak Park Honor Oak
London, SE23 1EA, United Kingdom
Reg No : 7444750
Registered in England

Telephone : 020 3397 1166
Website : <https://www.pickwickestates.co.uk>





GROUND FLOOR
APPROX. FLOOR
AREA 71.95 SQ.M.
(651 SQ.FT.)

pickwick estates

TOTAL APPROX FLOOR AREA 71.95 SQ.M. (774 SQ.FT.)
Whilst every effort is made to accurately reproduce these floor plans, measurements are approximate and to be used for guidance purposes only.
© Dulwich Energy Assessors Ltd. www.dea3d.co.uk

For Full EPC Information, click [here](#)