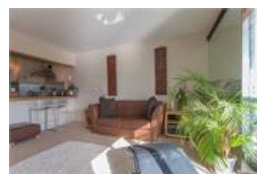
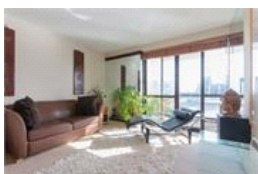
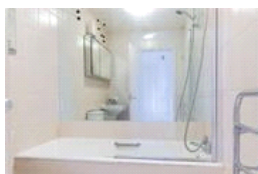
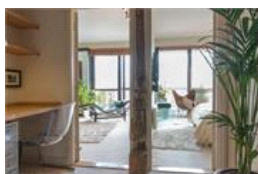
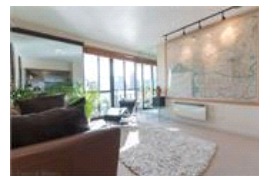
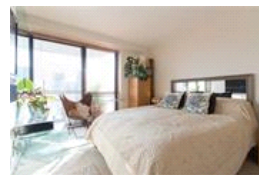
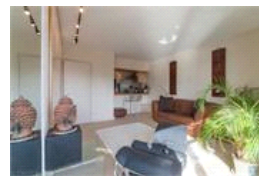
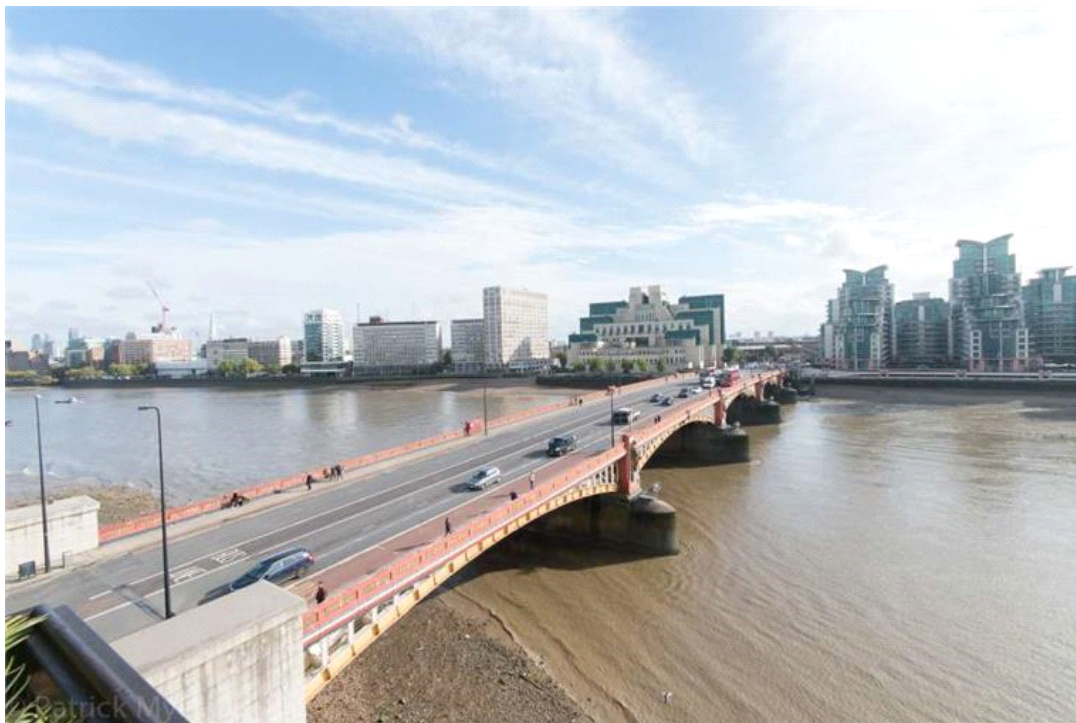


Rivermill, SW1V (1 bedroom Flat)

£2,000/month



## property description

AVAILABLE END SEPTEMBER - Stunning one-bedroom apartment on the 5th floor of this popular modern building. The flat has been maintained to a high standard throughout with a South facing riverside balcony offering impressive VIEWS OVER THE RIVER THAMES and Vauxhall Bridge. The property, which is presented furnished, consists of a reception room with a south facing riverside balcony, semi open planned stainless-steel effect kitchen with integrated appliances, a master bedroom with fitted wardrobes, a fully tiled bathroom with heated towel rail, bathtub, overhead shower and glass screen. Other benefits include carpets throughout living areas, an office space in the hallway, a porter and a p...

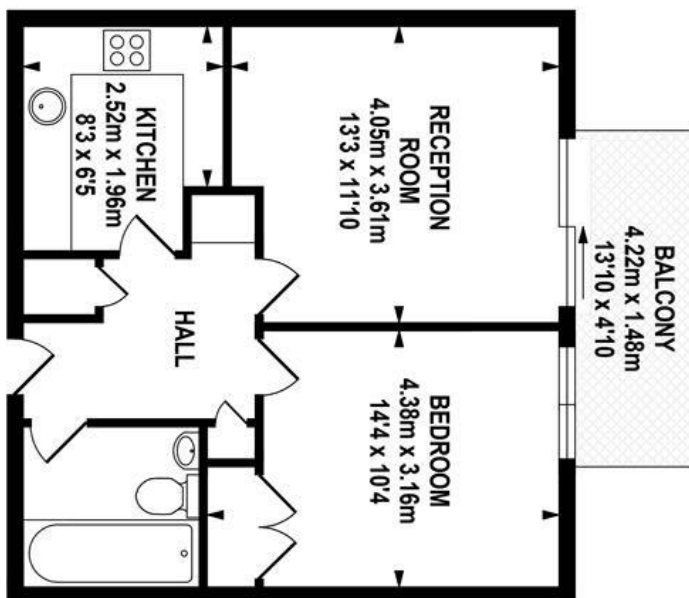
## property features

- Stunning one bedroom apartment - AVAILABLE END SEPTEMBER
- South facing balcony overlooking the River Thames
- Semi open planned kitchen
- Master bedroom with wardrobes
- Bathroom with shower above bath
- Office space

ALPS Estates Ltd trading as Pickwick Estates  
47 Honor Oak Park Honor Oak  
London, SE23 1EA, United Kingdom  
Reg No : 7444750  
Registered in England

Telephone : 020 3397 1166  
Website : <https://www.pickwickestates.co.uk>





**TOTAL APPROX. FLOOR AREA 46.90 SQ.M. (505 SQ.FT.)**

Whilst every effort is made to accurately reproduce these floor plans, measurements are approximate, not to scale and for illustrative purposes only.  
© Dulwich Energy Assessors Ltd. [www.dea-lld.co.uk](http://www.dea-lld.co.uk)

For Full EPC information, click [here](#).