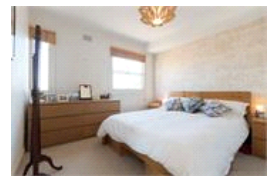
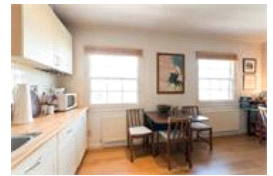


Lion Mills , E2 (2 Bedroom Flat)

£475,000



## property description

An exquisite two-bedroom third floor apartment within a beautifully converted Victorian Cotton Mill. The property is sold with a share of the freehold, it has been well maintained and is offered to the market in excellent condition. Internal features of the property include; semi open planned kitchen reception room, new wooden framed double-glazed sash windows that fill the property with natural light, a luxurious bathroom with a sleek stylish modern finish, the bathtub has a glass screen and fitted shower overhead. There is a good size master bedroom and a single second bedroom. The development spans over several buildings and residents enjoy a tranquil communal garden and use of off street parking facilities. The property is ideally situated for numerous transport links including Cambridge Heath and Bethnal Green Stations and the bus routes of Hackney Road whilst also being a short walk away from the weekend markets, cafés, bars and restaurants of Broadway Market and Columbia Road. The open green spaces of London Fields and Haggerston Park are around the corner with Shored...

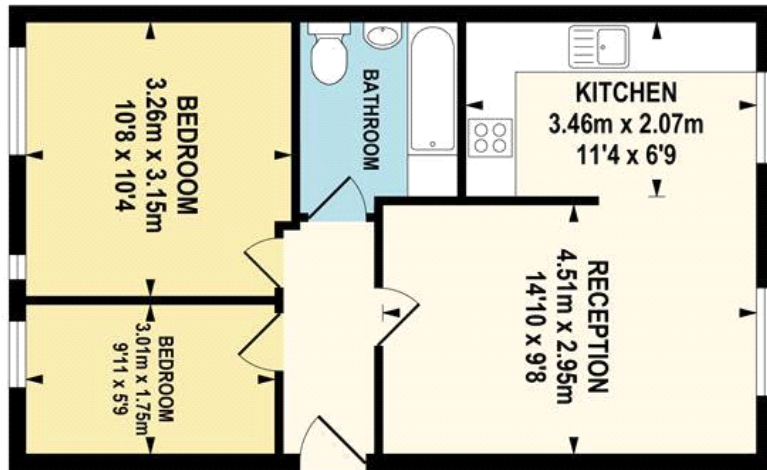
## property features

- Two bedroom 3rd floor apartment offered in excellent condition
- Situated in this unique converted Victorian Cotton Mill
- New double glazed wooden sash windows
- Share of freehold with extended lease
- Semi open planned kitchen reception room
- Luxurious bathroom with shower above the bathtub
- Tranquil communal gardens

ALPS Estates Ltd trading as Pickwick Estates  
47 Honor Oak Park Honor Oak  
London, SE23 1EA, United Kingdom  
Reg No : 7444750  
Registered in England

Telephone : 020 3397 1166  
Website : <https://www.pickwickestates.co.uk>





THIRD FLOOR FLAT  
APPROX. FLOOR  
AREA 45.76 SQ.M.  
(493 SQ.FT.)



TOTAL APPROX.FLOOR AREA 45.76 SQ.M. (493 SQ.FT.)

Whilst every effort is made to accurately reproduce these floor plans, measurements are approximate, not to scale and for illustrative purposes only.

©Dulwich Energy Assessors Ltd. www.dea-td.co.uk



For Full EPC Information, click [here](#)