

Brockley Rise, SE23 (3 Bedroom House)

£600,000



### property description

A lovely 3 bedroom 1950's family home offered to the market in excellent condition. The house is a mid terrace with a nice front and rear garden. Ideally located in the heart of Honor Oak Park giving easy access to local amenities and the station which has connection via the Overground and to London Bridge. The property also benefits from a garage and off street parking.

### property features

- Lovely 3 bedroom mid century freehold house
- Garage and off street parking
- Front and rear private garden
- Bathroom
- Reception room
- Kitchen breakfast room
- Downstairs WC
- Close to Honor Oak Park and Crofton Park...

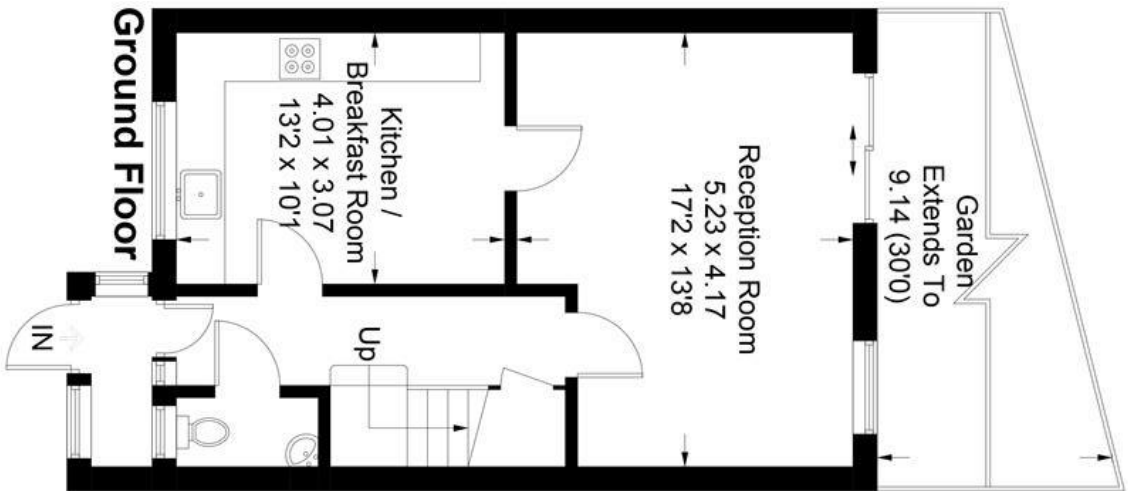
Brockley Rise, SE23 (3 Bedroom House)

£600,000



## Brockley Rise

Approximate Gross Internal Area  
990 sq ft / 92.0 sq m



## First Floor

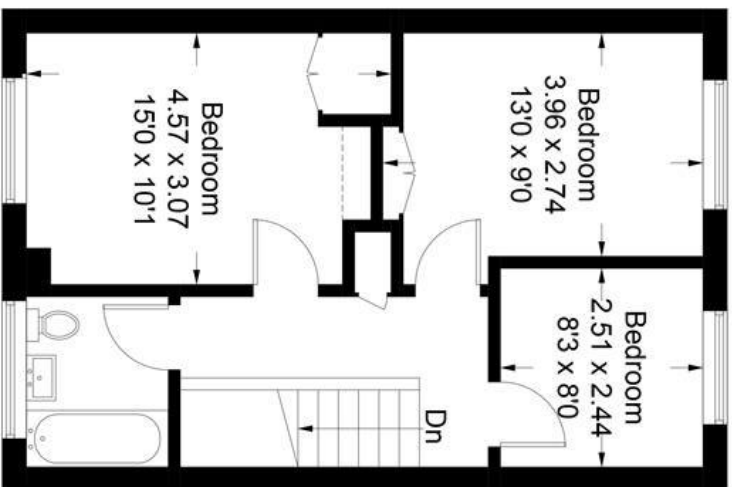


Illustration for identification purposes only,  
measurements are approximate.  
Drawn for Pickwick Estates

For Full EPC information, click [here](#)