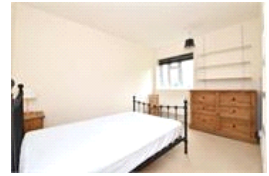


Valentine Court, SE23 (3 Bedroom Flat)

£1,500/month



property description

A spacious three bedroom ground floor flat offered to the market fully furnished, located just a short walk from Forest Hill station and town centre. Boasting a modern fitted kitchen, a private garden area as well as communal grounds, the property is in great condition and is available now.

property features

- 2 double bedroom garden flat
- Ground floor
- Separate study room
- Communal garden
- Close to Forest Hill station
- Modern kitchen
- Private garden
- Available now!

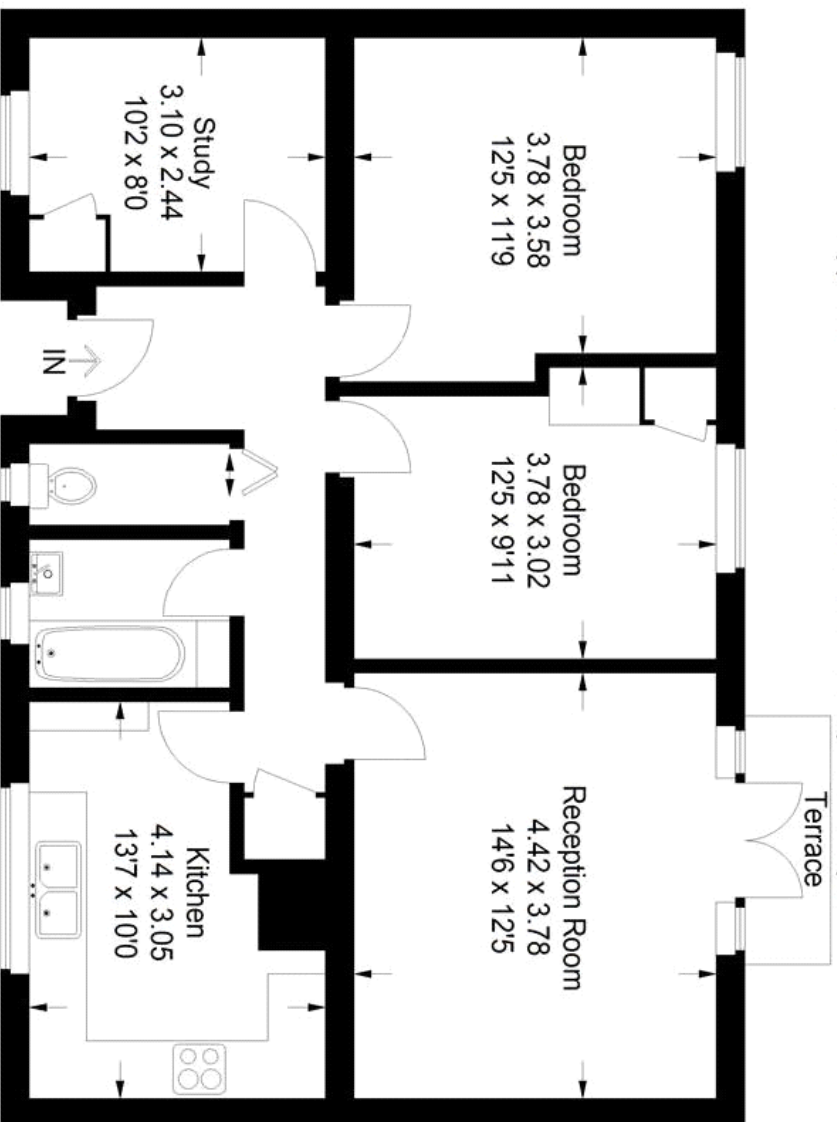
Valentine Court, SE23 (3 Bedroom Flat)

£1,500/month



Perry Vale

Approximate Gross Internal Area = 79 sq m / 851 sq ft



Ground Floor

Illustration for identification purposes only,
measurements are approximate.
Drawn for Benjamin Matthews

For Full EPC Information, click [here](#)