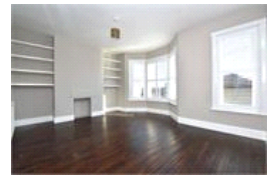


Buckthorne Road , SE4 (2 Bedroom Flat)

£450,000



property description

Conveniently located, light and spacious, newly decorated throughout. All one can ask for in a 2 double bedroom flat! Situated on the first floor of a lovely Victorian period house is this great flat. The entrance to the property is on the ground floor landing which is great for leaving shoes, coats and brollies. Upstairs is a large reception room to the front of the house, spanning the whole width of the property. There is an abundance of space and with large double glazed windows fitted with shutters there is plenty of light too! The 2 double bedrooms are of equal size and both quietly tucked away - one in the middle of the flat and one to the rear overlooking gardens. There is a fully fitted bathroom that has been recently redecorated to a high standard. The kitchen has been newly installed, is well laid out with plenty of room to cook for guests. Located close to both Honor Oak Park and Crofton Park Station which offers the local overground and national rail station making access into central London a breeze, on the main parade of shops there is an abundanc...

property features

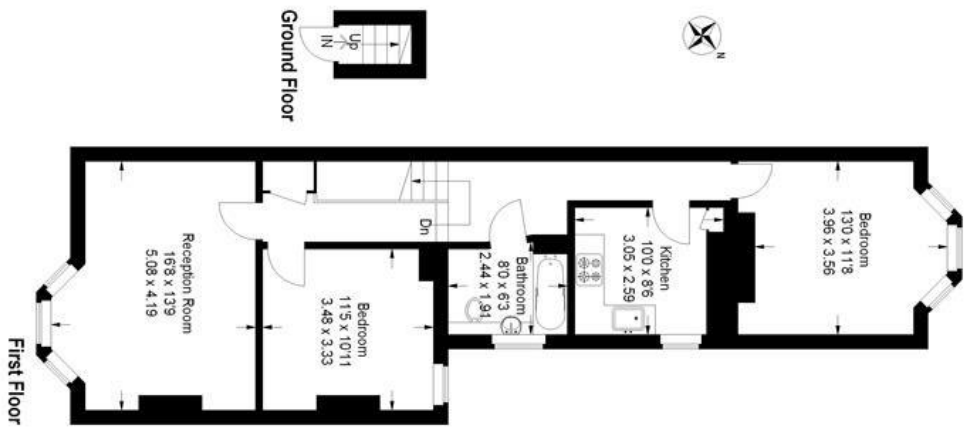
- Light and spacious 2 double bedroom flat
- Victorian conversion
- Offered in excellent condition
- Quiet residential street
- Newly refurbished bathroom
- Newly installed kitchen
- Large reception room
- Double glazing

ALPS Estates Ltd trading as Pickwick Estates
47 Honor Oak Park Honor Oak
London, SE23 1EA, United Kingdom
Reg No : 7444750
Registered in England

Telephone : 020 3397 1166
Website : <https://www.pickwickestates.co.uk>



Buckthorne Road



Approximate Gross Internal Area
808 sq ft / 75.1 sq m

Illustration for identification purposes only.
measurements are approximate.
Drawn for Pidwick Estates.

For Full EPC information, click [here](#)