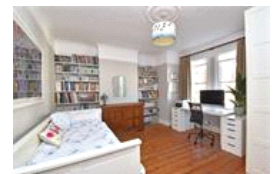
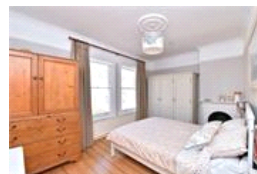
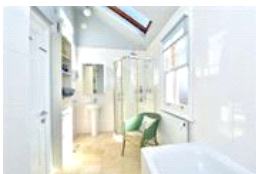
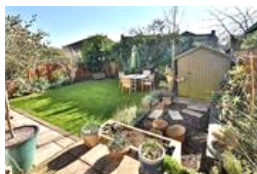
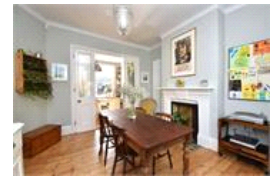
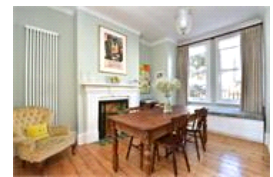
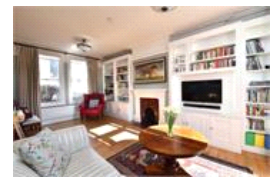


Benson Road, SE23 (4 bedroom House)

£1,000,000 (OIEO)



property description

Offering an abundance of character and charm is this beautiful, double fronted Victorian Semi-detached family home with a SOUTH facing rear garden. The house is well proportioned throughout with plenty of entertainment space on the ground floor and 4 large double bedrooms upstairs. As you approach the house you are greeted by neat front garden shielded by a wooden picket fence. The house has great curb appeal, a very handsome specimen with a central doorway with stunning stained glass recently installed and 8 large sash windows. As you enter the house there is an immediate feeling of symmetry, light and space, a wide central hallway that gives access to all the primary ground floor rooms...

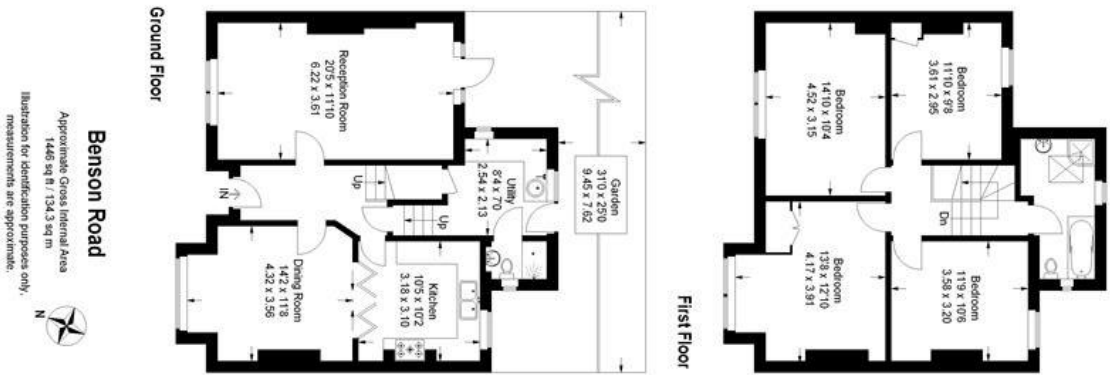
property features

- Stunning 4 double bedroom, double fronted Victorian house
- SOUTH facing landscaped rear garden
- Large full length reception room
- Fully fitted kitchen
- Dining Room
- Utility room with WC and shower
- 4 double bedrooms

ALPS Estates Ltd trading as Pickwick Estates
47 Honor Oak Park Honor Oak
London, SE23 1EA, United Kingdom
Reg No : 7444750
Registered in England

Telephone : 020 3397 1166
Website : <https://www.pickwickestates.co.uk>





For Full EPC information, click [here](#)