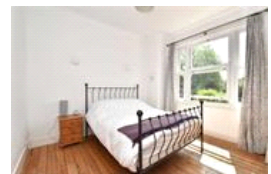
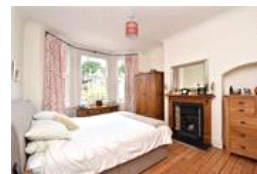
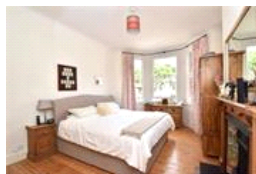
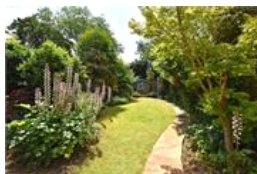
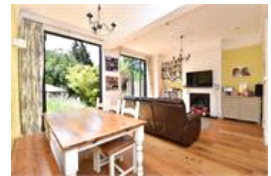


Lowther Hill, SE23 (4 bedroom House)

£1,100,000



property description

OPEN DAY SATURDAY 20th JULY. Absolutely spectacular red brick semi-detached, 4-bedroom Victorian family home with off street parking and a 78 ft SOUTH facing landscaped rear garden, located on a pretty tree-lined residential street in the heart of Honor Oak Park. What else could you ask for in a house? The imposing red brick front exterior is impressive, classic Victorian large bay sash windows that dominate the façade with detailed masonry surrounding and an arched porch above the stunning stained-glass front door. This special house has been lovingly cared for by its current owners and is offered to the market in excellent condition. The house retains many of its period features s...

property features

- Superb semi detached 4 bedroom Victorian family home
- SOUTH facing 78ft rear garden with sand stone patio, lawn and mains powered shed
- Private, peaceful tree lined residential street
- Large kitchen and family room with underfloor heating and double bi-fold doors
- Formal reception room

ALPS Estates Ltd trading as Pickwick Estates
47 Honor Oak Park Honor Oak
London, SE23 1EA, United Kingdom
Reg No : 7444750
Registered in England

Telephone : 020 3397 1166
Website : <https://www.pickwickestates.co.uk>





For Full EPC information, click [here](#)