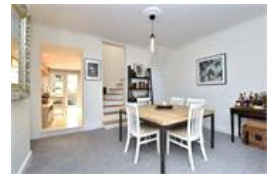
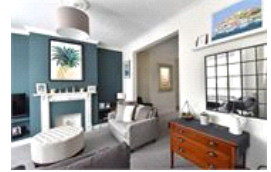


Ravensbourne Road, SE6 (2 Bedroom House)

£635,000



## property description

Stylish and elegantly refurbished to an impeccable standard is this superb freehold 2-bedroom Victorian terraced house, located on this popular residential street close to Honor Oak Park and Catford Bridge stations. The house has an imposing brick facade and a raised, well-kept front garden shielding it from the street. The ground floor has two reception rooms and a kitchen, all the rooms on the ground floor have good ceiling heights, the windows have all been replaced with wooden double glazed sash windows and carpeted for those cold weekends in. The reception room at the front creates a cosy feel with a beautiful original Victorian fireplace as the centerpiece, cornicing on the ceiling and the current owners have added some lovely features. The rear reception room has been cleverly opened to the kitchen to create a dining area. The kitchen itself is fully equipped with plenty of base level units with a warm wooden worktop above fitted with a gas hob and the sink at the back overlooking the garden. Double doors lead out to the side return that is slabbed in beautiful natural York s...

## property features

- Victorian terraced house
- Two double bedrooms
- Large reception room
- Quiet residential road
- Close proximity to Honor Oak and Catford Stations
- Beautifully decorated throughout

ALPS Estates Ltd trading as Pickwick Estates  
47 Honor Oak Park Honor Oak  
London, SE23 1EA, United Kingdom  
Reg No : 7444750  
Registered in England

Telephone : 020 3397 1166  
Website : <https://www.pickwickestates.co.uk>

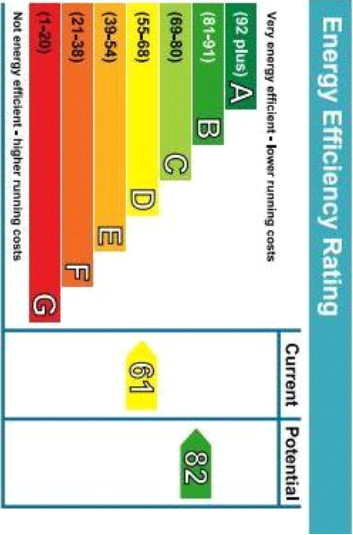


Ravensbourne Road

Approximate Gross Internal Area  
(Excluding Boiler Room)  
93.9 sq m / 1011 sq ft



Illustration for identification purposes only.  
measurements are approximate  
Drawn for Pickwick Estates



For Full EPC information, click [here](#)