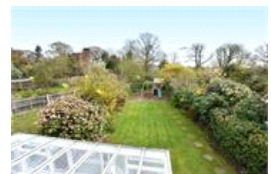
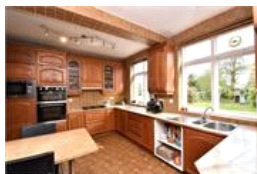
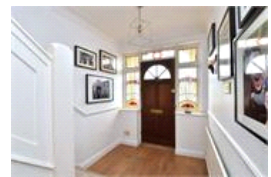


Rocombe Crescent, SE23 (5 bedroom House)

£1,200,000 (Guide Price)



## property description

Perched at the top of Forest Hill, offering far reaching views from the upper floors over the London skyline (including views of St Paul's) and the Kent countryside is this lovely 5-bedroom, double fronted, detached 1930's family home. The house benefits from approximately 2000 sqft of internal living space, off street parking for 3 cars, a garage and a 90 ft rear garden. This house ticks all the boxes for a growing family home, with a less than few minute walk to two highly rated primary schools and the renowned Horniman Museum. You are spoilt for transport options with a 10min walk to either Honor Oak Park or Forest Hill Train Stations, with Dulwich Park and village being just a 25min ...

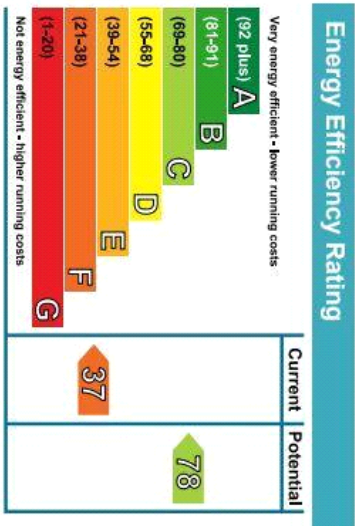
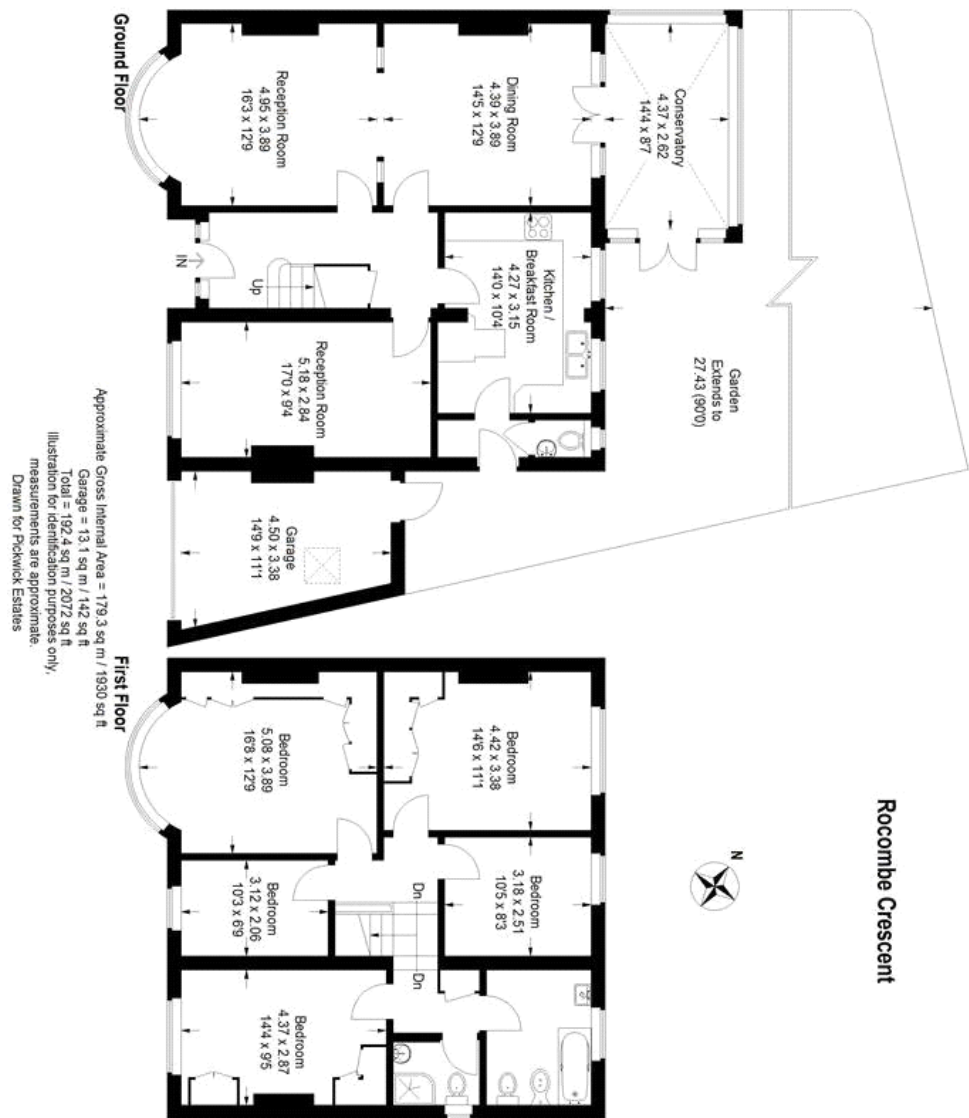
## property features

- Double fronted detached 5 bedroom family home
- Offering approximately 2000 sqft
- Off street parking for 3 cars and a arage
- 2 bathrooms
- Quiet residential neighborhood
- 90ft rear garden
- 3 reception rooms
- Kitchen

ALPS Estates Ltd trading as Pickwick Estates  
47 Honor Oak Park Honor Oak  
London, SE23 1EA, United Kingdom  
Reg No : 7444750  
Registered in England

Telephone : 020 3397 1166  
Website : <https://www.pickwickestates.co.uk>





For Full EPC Information, click [here](#)