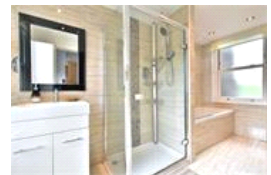
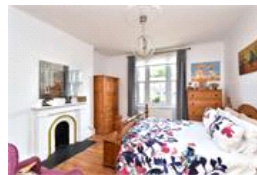
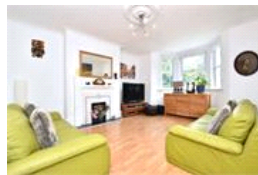
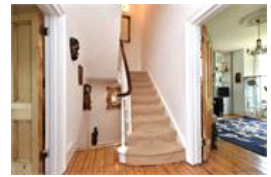


Brockley Rise, SE23 (4 Bedroom House)

£1,050,000



property description

Offering approximately 2132 st ft of internal floor space over and set over four floors is this handsome 4 double bedroom, Victorian townhouse family home. The property also benefits from a large rear garden and private off street parking. This imposing house has great kerb appeal offering typical Victorian character and charm. A large sash bay window dominates the raised ground floor and lower ground floors with two further sash windows on the floors above. A walled front garden with a mature hedge shields the house from the street, the entrance to the property is offset on the left hand side via steps leading to the raised ground floor entrance porch with detailed arched masonry o...

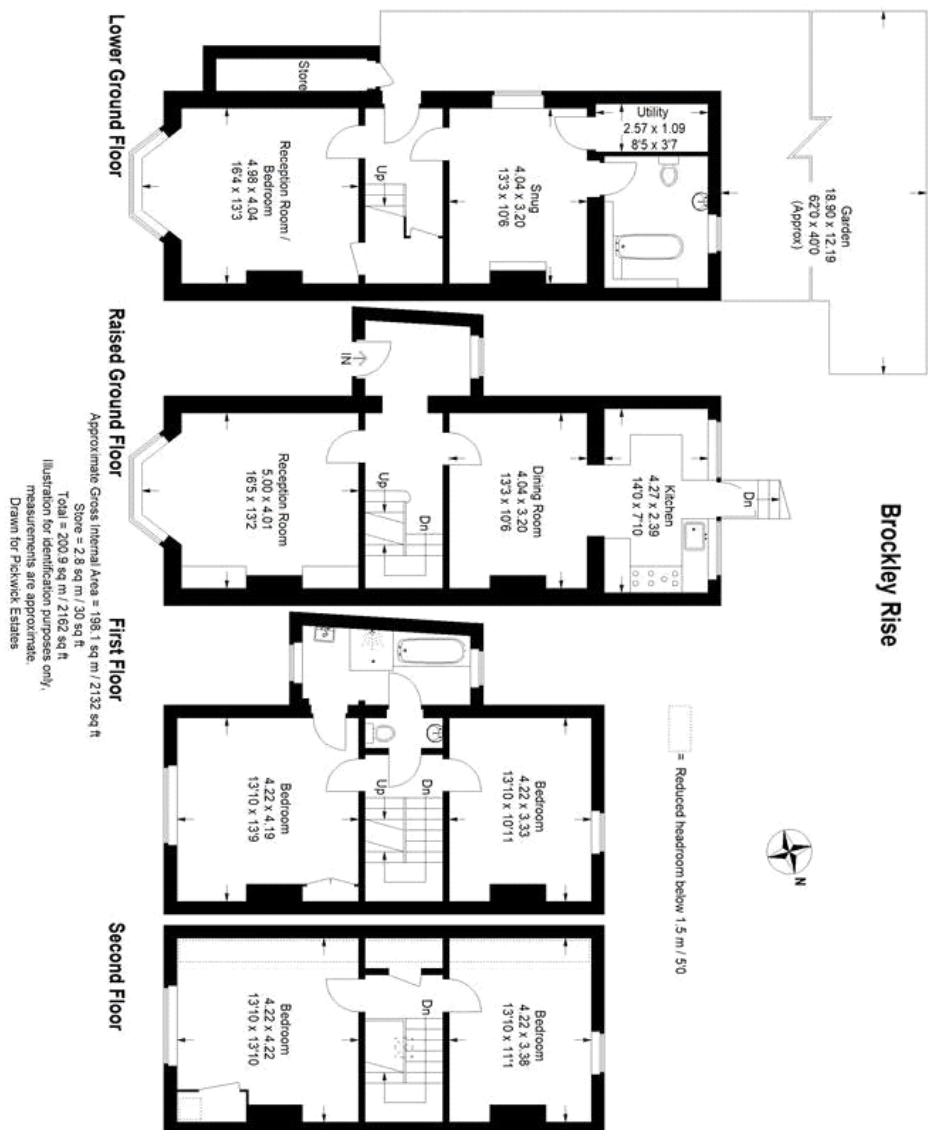
property features

- Large 4/5 double bedroom Victorian townhouse family home offering approx 2132 sf ft
- Set over 4 floors, lower ground, raised ground, first and second floors
- 3 reception rooms and an office or additional
- 2 bathrooms and a separate toilet
- Large West facing rear garden and front garden
- Private off street parking for 2 cars
- Spacious kitchen dining room with plenty...

ALPS Estates Ltd trading as Pickwick Estates
47 Honor Oak Park Honor Oak
London, SE23 1EA, United Kingdom
Reg No : 7444750
Registered in England

Telephone : 020 3397 1166
Website : <https://www.pickwickestates.co.uk>





For Full EPC information, click [here](#)