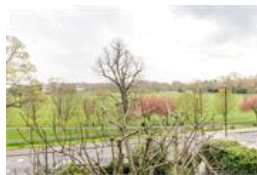
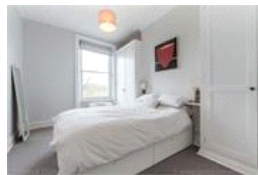


Peckham Rye , SE22 (2 Bedroom Flat)

£575,000



property description

A truly stunning two bedroom Victorian conversion flat overlooking Peckham Rye park. The property is decorated and presented to a very high standard and has exceptionally high ceilings giving the property a fantastic feeling of space and is also flooded with light. The flat has two bedrooms and a superb open plan kitchen/Reception room a handy utility room leading onto a really stunning bathroom. There is also a beautiful and large shared garden. The property is ideally located for Peckham Rye station as well as the many buses that will take you to Central London. Lordship Lane is just a short stroll away and has a wealth of shops bars and restaurants to suits all tastes as well as the inc...

property features

- Share of freehold
- Large shared garden
- Beautifully presented throughout
- Stunning bathroom
- Overlooking The Rye
- Sash windows
- Utility room
- Very high ceilings

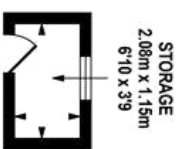
ALPS Estates Ltd trading as Pickwick Estates
47 Honor Oak Park Honor Oak
London, SE23 1EA, United Kingdom
Reg No : 7444750
Registered in England

Telephone : 020 3397 1166
Website : <https://www.pickwickestates.co.uk>

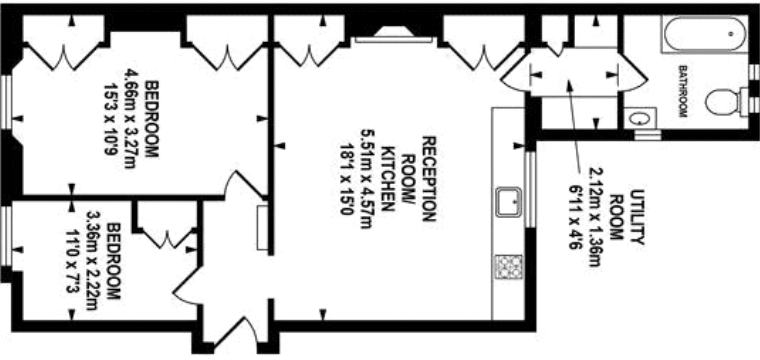




RAISED GROUND FLOOR
APPROX. FLOOR
AREA 2.52 SQ.M.
(27 SQ.FT.)



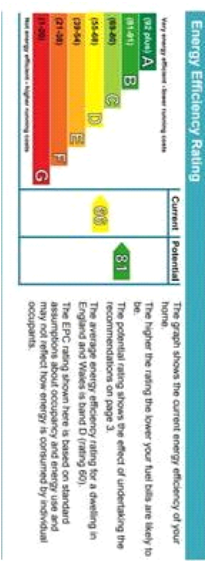
FIRST FLOOR
APPROX. FLOOR
AREA 61.15 SQ.M.
(658 SQ.FT.)



TOTAL APPROX. FLOOR AREA 63.67 SQ.M. (685 SQ.FT.)

While every effort is made to accurately reproduce these floor plans, measurements are approximate, not to scale and for illustrative purposes only.

© Daisych Energy Assessors Ltd. www.daisych.co.uk



For Full EPC information, click [here](#)