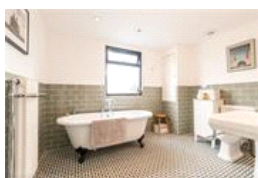
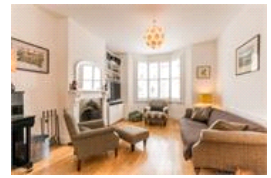


Fellbrigg Road, SE22 (4 bedroom House)

£1,300,000



property description

A truly stunning, large Victorian terrace house in the very heart of East Dulwich. The property is situated on a very sought after road just minutes walk from Lordship Lane but on a lovely quiet residential location. The property has been decorated and refurbished to a very high standard throughout and is ready for a new family to move straight into. There are four generous bedrooms and two large luxurious bathrooms upstairs. Downstairs a fabulous double reception with sash windows and a working fireplace a handy downstairs WC and a simply fabulous kitchen/breakfast room leading out to a really enchanting garden which lights up beautifully at night and houses a fun pizza oven. Fellbrigg Road...

property features

- Located in the centre of East Dulwich
- Four double bedrooms
- Two large bathrooms
- Cellar
- Close to East Dulwich station
- Large extended kitchen
- Garden with lights and pizza oven
- Working fireplace

ALPS Estates Ltd trading as Pickwick Estates
8 Woodwarde Road Dulwich
London, SE22 8UJ, United Kingdom
Reg No : 4270797
Registered in England

Telephone : 020 3397 1144
Website : <https://www.pickwickestates.co.uk>



