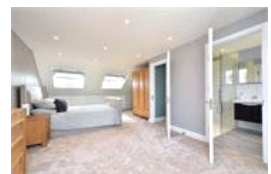
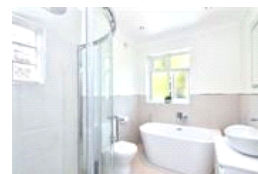
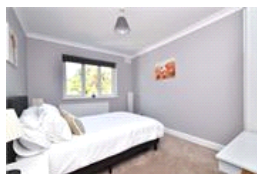
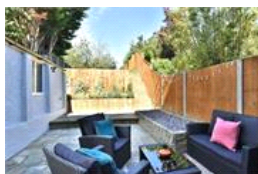


Grierson Road , SE23 (4 bedroom House)

£850,000



property description

This stunning 1930's, semi-detached, 4 double bedroom family home was completely refurbished from top to bottom, to inside and out in the summer of 2018 – everything was fitted brand new and finished to a very high specification. The stunning West facing, 100ft private rear garden was also re-landscaped last summer as well! If you are looking for a key turn family home this show home property is ideal! Additional benefits include a neat front garden that could be converted into a driveway, shared off street parking, separate garage with electricity and water supply, all windows are triple glazed for heat and sound insulation, engineered oak flooring on the ground floor, high speed fibre inter...

property features

- Stunning 1930's semi-detached, 4 double bedroom family home
- Completely refurbished, including triple glazing throughout
- Cosy reception room
- Family bathroom en-suite shower room and downstairs WC
- 100ft West facing garden with patio and raised

ALPS Estates Ltd trading as Pickwick Estates
47 Honor Oak Park Honor Oak
London, SE23 1EA, United Kingdom
Reg No : 7444750
Registered in England

Telephone : 020 3397 1166
Website : <https://www.pickwickestates.co.uk>





For Full EPC Information, click [here](#).