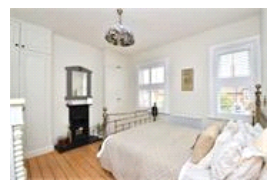
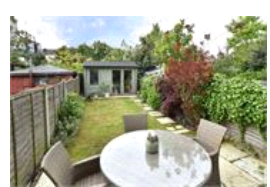


Brockley Rise , SE23 (3 bedroom House)

£750,000



property description

Offering an abundance of character and charm is this pretty, mid terrace, 3-bedroom Victorian family home. The house is in a prime location with plenty of amenities on its door step including Stillness Primary School on the opposite side of the street and a choice of Stations between Honor Oak Park and Crofton Park. The house has great curb appeal as it is offset from the street by a stylish landscaped front garden with Sandstone slabs and storage for bins. It's a typical handsome Victorian façade with a square bay sash windows on the ground floor and period detailing above the front door and upper sash windows. Internally the house has been decorated by the current owners including a new bathroom, kitchen and some nice additional features such as restored cast iron radiators, shutters and fitted wardrobes. The ground floor offers well laid out accommodation with a large double reception room at the front with stripped wooden floors, high ceilings with cornicing, a sash square bay window with boxed seating and a lovely wood burner as a centrepiece. The hallway has a...

property features

- Beautifully presented 3 bedroom Victorian family home
- Double reception room
- West facing rear garden and a nicely landscaped front garden
- Stylish kitchen
- Downstairs WC
- Sophisticated bathroom
- Opposite Stillness Primary School

ALPS Estates Ltd trading as Pickwick Estates
47 Honor Oak Park Honor Oak
London, SE23 1EA, United Kingdom
Reg No : 7444750
Registered in England

Telephone : 020 3397 1166
Website : <https://www.pickwickestates.co.uk>





For Full EPC information, click [here](#)