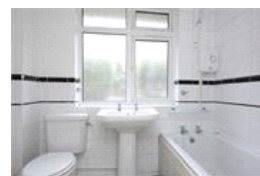
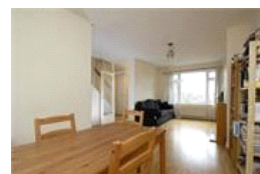
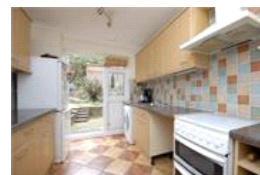


The Fieldings, SE23 (3 bedroom House)

£2,000/month



property description

Set in this quiet idyllic cul-de-sac just off Manor mount is this pretty mid terraced town house with exceptional views over the South East and Kent. The house has its own front and back garden and there is residential parking right outside. On the ground floor as you enter, you are greeted by a cosy reception room and dining room leading to the rear garden. The kitchen is fully fitted and there is a downstairs loo. Upstairs there are 3 double bedrooms and a bathroom with a bath and electric power shower. The Fieldings is conveniently located close to Forest Hill Station (London Bridge Station and the Overground) as well as bus routes into the West End and City. There is a Sainsbury's within walking distance and an array of coffee shops and boutiques! Unfurnished, available NOW. Council Tax band D

property features

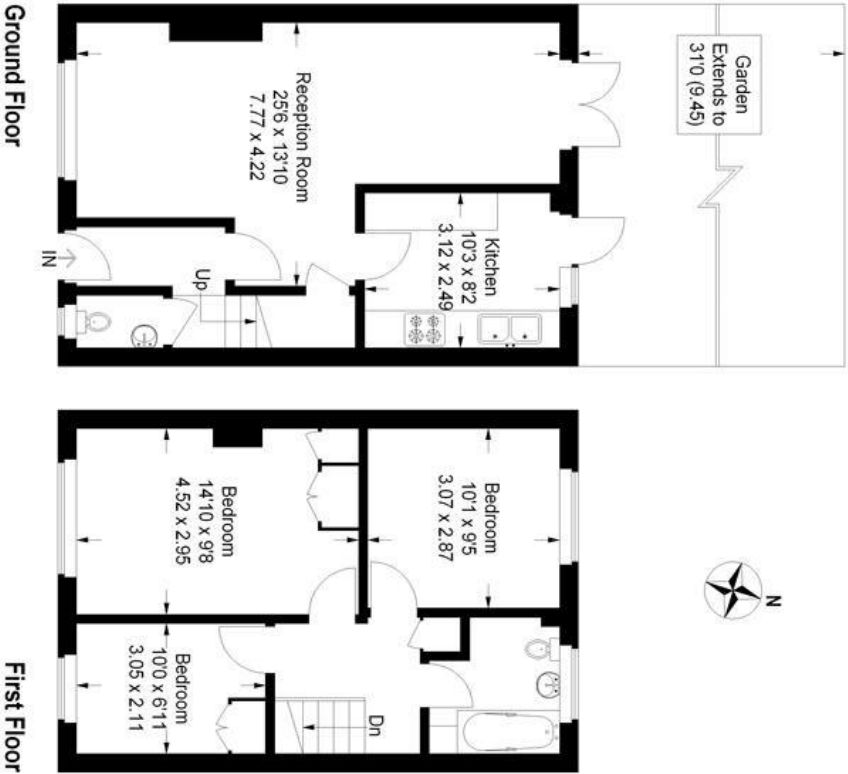
- 3 bedroom mid terrace house set in a quiet cul-de-sac in Forest Hill
- Reception room with dining area
- Fully fitted kitchen
- Quiet cul-de-sac
- Private rear garden
- Front garden and residential parking right outside
- Conveniently located for Forest Hill Station (London Bridge 15mins)
- Unfurnished

ALPS Estates Ltd trading as Pickwick Estates
47 Honor Oak Park Honor Oak
London, SE23 1EA, United Kingdom
Reg No : 7444750
Registered in England

Telephone : 020 3397 1166
Website : <https://www.pickwickestates.co.uk>

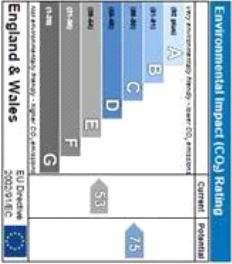
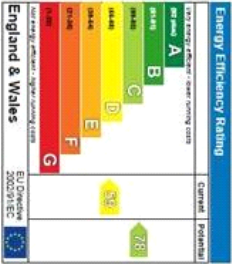


The Fieldings



Approximate Gross Internal Area
888 sq ft / 82.5 sq m

Illustration for identification purposes only,
measurements are approximate.
Drawn for Pickwick Estates.



For Full EPC information, click [here](#)