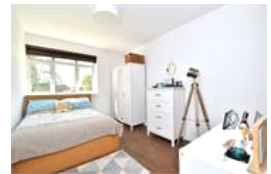


Devonshire Road, SE23 (1 Bedroom Flat)

£300,000



## property description

Calling all first time buyers! Decorated in a sophisticated style is this lovely one bedroom flat on the first floor of this well-maintained block located on the corner of Devonshire and Ewelme Road in Forest Hill. The property benefits from a long lease, low service charges, views, lots of storage, use of communal gardens and double glazing throughout. The property is well located for the local amenities of Forest Hill including Forest Hill station which is within 300m. The flat is situated at the back of the block on the side of Ewelme Road shielding it from the main street allowing it to be more quiet and secluded. Upon entry to the flat there is a spacious entrance hall with a bleached wood effect flooring that leads to all the rooms and there is a good size storage cupboard at the end of the hallway. The bathroom is immediately on your left as you enter, comprising a fashionable bathroom suite with a square wash hand basin, toilet and bath with shower enclosure above, all tailored with chrome fittings. The bath and shower area are clad in neutrally coloured tiles. ...

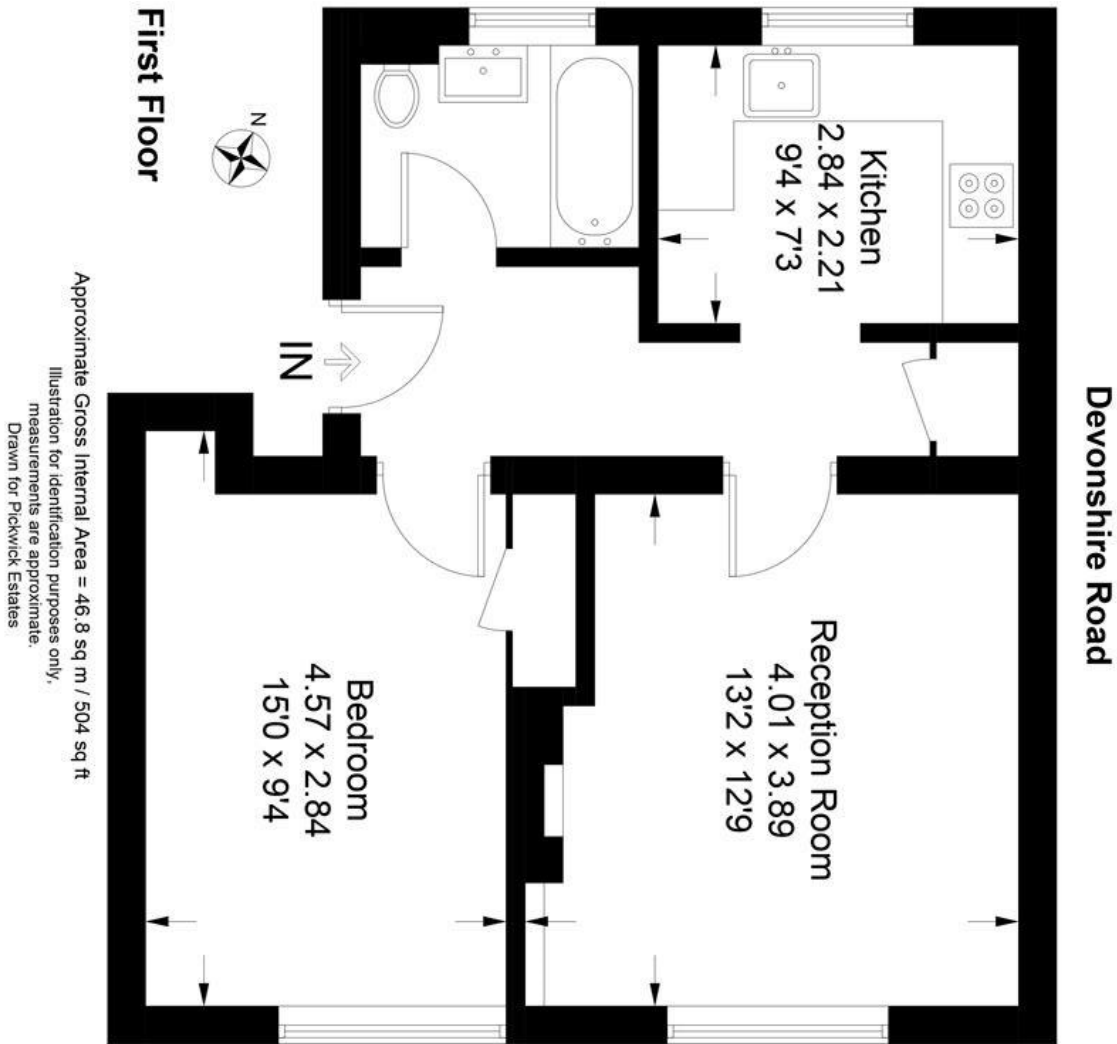
## property features

- Stylishly decorated one bedroom flat
- First floor of a well maintained block
- Situated at the back of the block making it more quiet and secluded
- Bathroom suite
- Well proportioned kitchen with intergraded appliances
- Good size bedroom with a built in storage cupboard
- Access and views over communal gardens
- Light and bright South facing reception ...

ALPS Estates Ltd trading as Pickwick Estates  
47 Honor Oak Park Honor Oak  
London, SE23 1EA, United Kingdom  
Reg No : 7444750  
Registered in England

Telephone : 020 3397 1166  
Website : <https://www.pickwickestates.co.uk>





Energy Efficiency Rating		
Very energy efficient - lower running costs	Current	Potential
(92 plus) <b>A</b>		
(81-91) <b>B</b>		
(69-80) <b>C</b>		
(55-68) <b>D</b>	67	67
(39-54) <b>E</b>		
(21-38) <b>F</b>		
(1-20) <b>G</b>		
Not energy efficient - higher running costs		
<b>England &amp; Wales</b>		
EU Directive 2002/91/EC		

For Full EPC information, click [here](#)