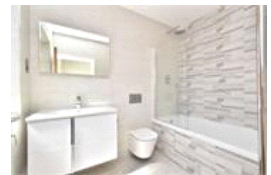
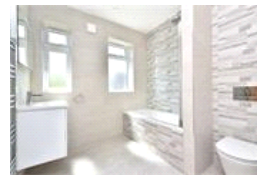
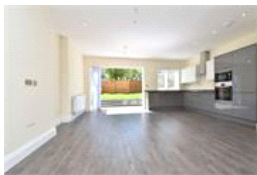


Parbury Road, SE23 (4 Bedroom House)

£2,500/month



property description

For professional sharers or families: Newly refurbished to high specification and sat proudly on the sunny South facing garden side of this popular street is this is a superb 4 bedroom 1930's mid terrace house. The property has been cleverly extended at the rear and loft converted to create a very spacious family home (1450 sqft). Located moments from all the convenient amenities the high street has to offer and Honor Oak Park station with excellent connections to London Bridge and the Overground. The front of the house has an appealing façade with traditional curved bay windows on the first and second floor that have been double glazed. A cute front garden shields the house from the str...

property features

- Newly refurbished, high spec, 4 bedroom 1930's family home
- South facing rear garden
- Double glazing throughout and brand new heating system
- Spacious front reception room semi open planned to rear reception room
- Huge rear kitchen reception room extension with integrated appliances and bi-fold doors to garden

ALPS Estates Ltd trading as Pickwick Estates
47 Honor Oak Park Honor Oak
London, SE23 1EA, United Kingdom
Reg No : 7444750
Registered in England

Telephone : 020 3397 1166
Website : <https://www.pickwickestates.co.uk>



Parbury Road, SE23 (4 Bedroom House)

£2,500/month



For Full EPC information, click [here](#)