

## property description

SATURDAY VIEWINGS PREFERRED. Located on the first floor of this handsome Victorian terraced house is this beautifully presented 2 double bedroom first floor flat that offers almost 750 sq ft of floorspace, double glazing throughout and is being sold with a share of freehold. Garthorne Road is a very peaceful residential street thanks to being no entry from one end but still accessible for pedestrians and cyclists. This house is located at the Honor Oak Park end allowing easy access to the station which has regular Overground services and connections to London Bridge. The house has plenty of kerb appeal with its exposed brickwork and detailed masonry around the windows. The property is set back from the street by a small front garden with a pathway leading to the front door that is protected by a porch with detailed woodwork above. Entrance to the flat is on the ground floor through the well-maintained communal hallway. Stairs lead upwards to the kitchen breakfast room which has been ingeniously opened up to utilise the hallway space. The kitchen is set to one side ...

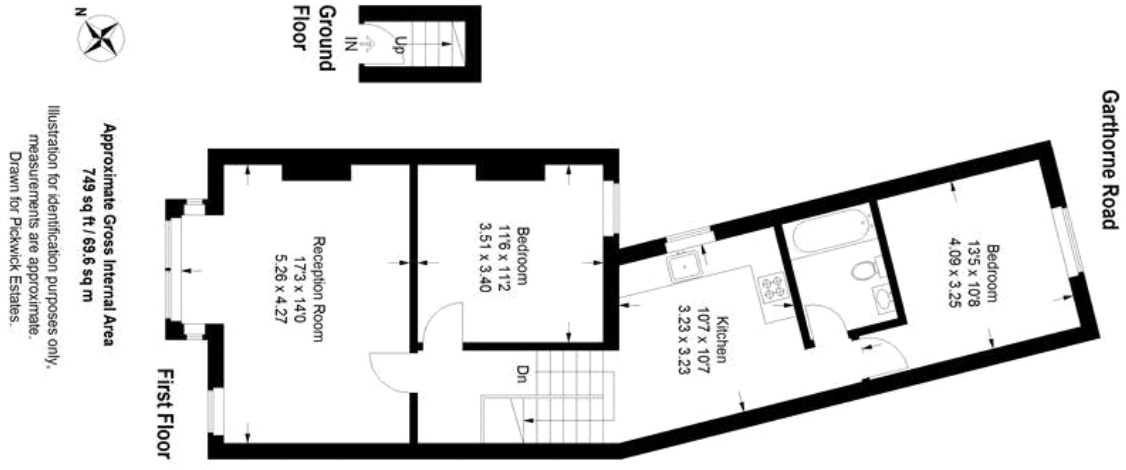
## property features

- Beautifully presented 2 double bedroom first floor flat
- SHARE OF FREEHOLD
- Victorian period property
- Luxurious family bathroom
- Entrance on the ground floor
- Large reception room occupying the whole width of the house
- Kitchen breakfast room
- Period features including high ceilings ...

ALPS Estates Ltd trading as Pickwick Estates  
47 Honor Oak Park Honor Oak  
London, SE23 1EA, United Kingdom  
Reg No : 7444750  
Registered in England

Telephone : 020 3397 1166  
Website : <https://www.pickwickestates.co.uk>





For Full EPC information, click [here](#)